

**Owner's Manual**  
**1500lb Capacity**  
**Motorcycle/ATV Work Station**



**⚠ WARNING ⚠**

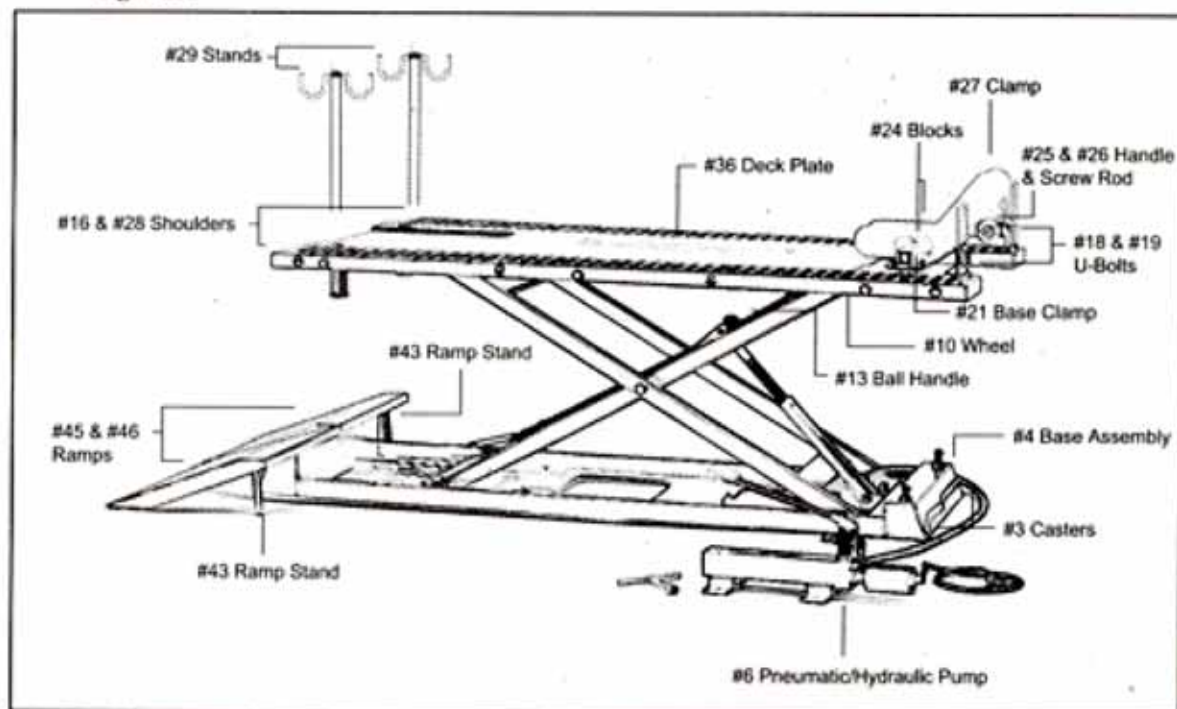
**Read all instructions and safety warnings before operating this equipment. Failure to follow the instructions and safety warnings may result in personal injury or property damage.**

## WARNINGS

1. Carefully center load on the lift.
2. Do NOT exceed the rated capacity of the lift - 1,500lbs Maximum Capacity.
3. Keep all extremities (hands, feet, etc) away from the lift. Do NOT reach beneath lift.
4. Do NOT put any tools or other equipment beneath the lift.
5. Do NOT get on the lift while it is elevated.
6. Do NOT ride vehicle onto the lift.
7. When moving the lift, it must be in the lowered position.
8. Do NOT use this equipment/lift without first reading and understanding all instructions, precautions and warnings. Failure to do so may result in injury and/or property damage.
9. Working area MUST be clean, clutter-free and well lit.
10. Foot controller should be as far away from the lift as possible when lowering or raising the lift.
11. Recommended for indoor use.
12. Do NOT wear loose or ill fitting clothing while operating the lift. Long hair must be secured.

## INSTRUCTIONAL DIAGRAM

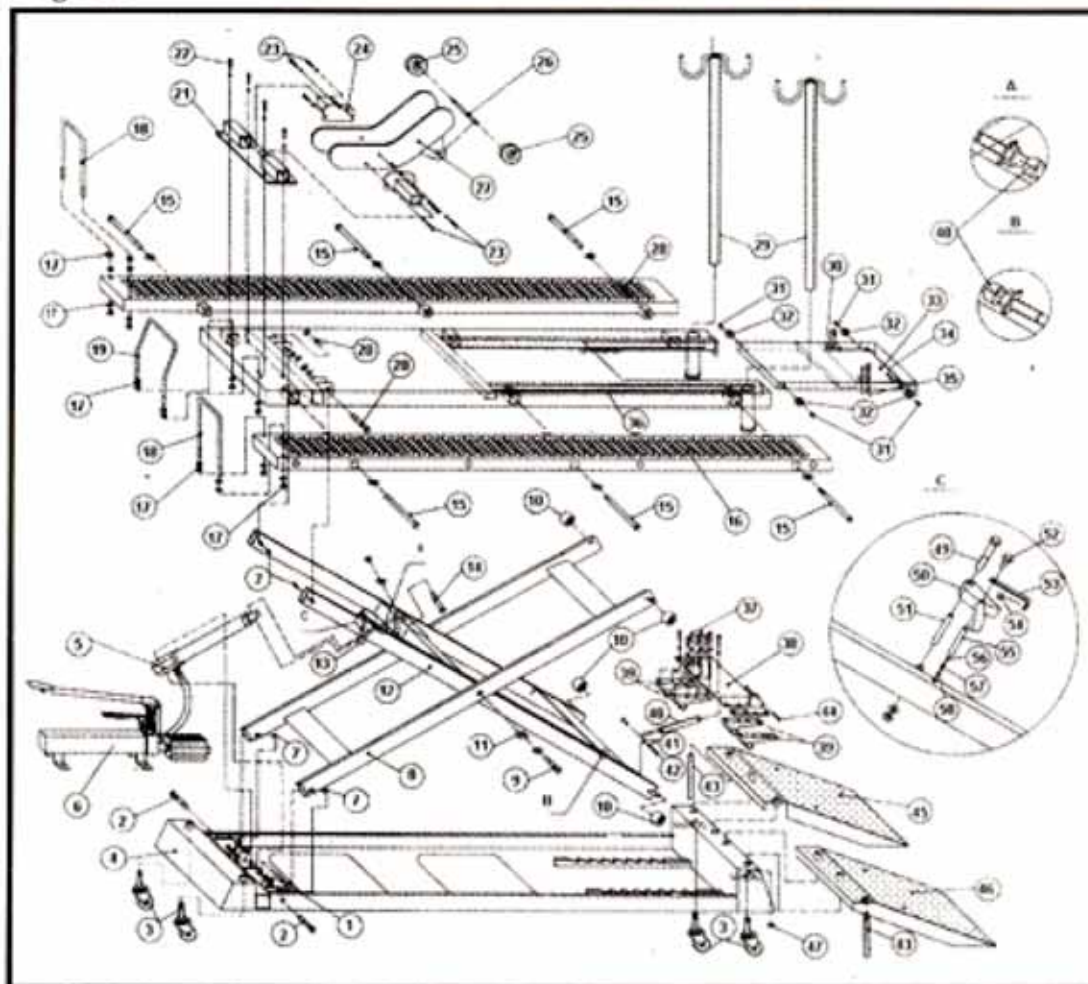
Figure 1



## PARTS LIST

Please make sure to confirm that all parts are included.

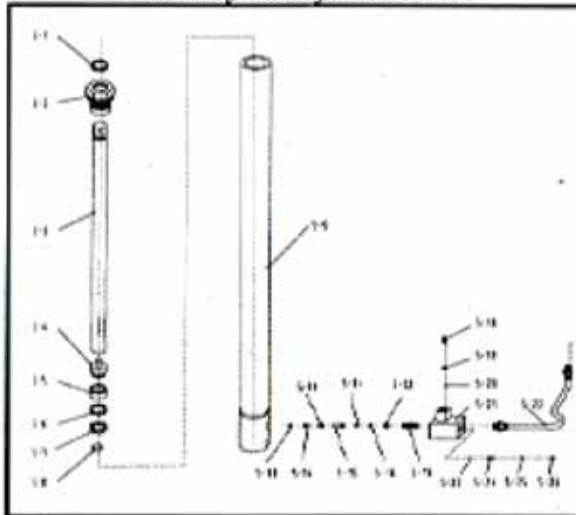
Figure 2



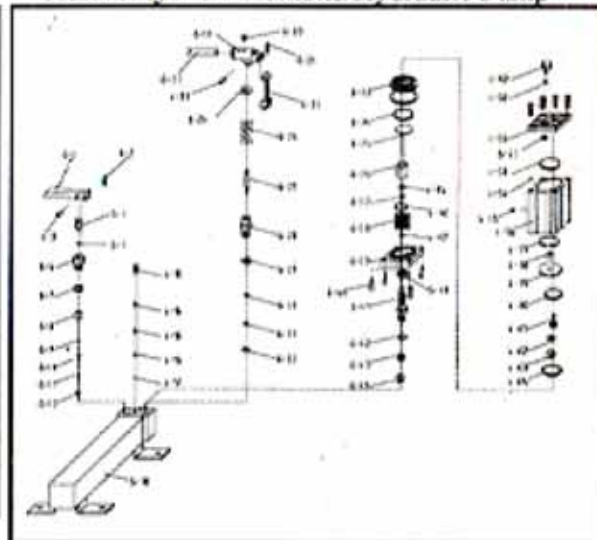
Part Number	Description	Quantity
1	M16 A110 Bolt, Nut & Washer	1
2	M14 A110 Bolt, Nut & Washer	1
3	2" Caster	4
4	Base Assembly	1
5	Hydraulic Jack	1
6	Pneumatic/Hydraulic Pump (see page 5 or 7 for image)	1
7	Bearing 1520	8
8	Link Rod 1	1
9	M20 A120 Bolt, Nylon Nut & Washer	2
10	Wheel	4
11	Bearing 2020	8
12	Link Rod 2	1
13	Ball Handle	1
14	M16 A70 Bolt, Nut & Washer	1
15	M16 A370 Bolt & Washer	6
16	Shoulder n Right (see page 5 for image)	1
17	M12 Nut & Washer	12
18	U-Bolt (see page 6 for image)	2
19	U-Bolt (see page 6 for image)	1
20	M14 A80 Bolt, Nut & Washer	2
21	Base Clamp (see page 6 for image)	1
22	M12 A25 Bolt, Nut & Washer	4
23	M8 A12 Bolt & Lock Washer	6
24	Block	2
25	Handle - Clamp (see page 6 for image)	2
26	Screw Rod (see page 6 for image)	1
27	Clamp (see page 6 for image)	2
28	Shoulder n Left (see page 5 for image)	1
30	M5 30 Bolt	6
31	M8 Bolt, Nut & washer	4
32	Nylon Wheel	4
33	Deck Plate (Movable)	1
34	Lock Assembly (Deck Plate)	1
35	M5 Lock Nut	6
36	Deck Plate (Main)	1
37	M8 A18 Bolt & Washer	16
38	Safety Plate	1
39	Safety Block	4
40	Link Rod	1
41	M8 Washer	2
42	M8 20 Bolt, Nut & Washer	1
43	Ramp Stand (see page 6 for image)	2
44	M8 A25 Bolt, Nut & Washer	1
45	Ramp n Left (see page 6 for image)	1
46	Ramp n Right (see page 6 for image)	1
47	Snap Ring D14	4
48	M8 25 Bolt & Nut	2
49	M8 60 Bolt, Nut & Washer	1
50	Release Handle	1
51	Copper Ring	1
52	M6 Bolt	1
53	Cable Link Plate	1
54	Release Cable	1
55	Guide Ring	1
56	Rod	1
57	Spring	1
58	M12 12 Bolt	1



**Assembly # 5 Hydraulic Jack**



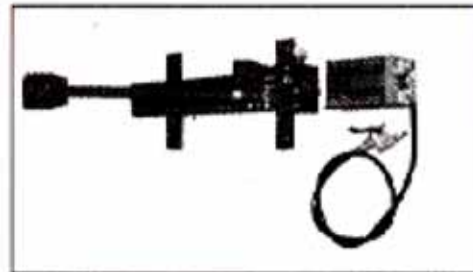
**Assembly # 6 Pneumatic/Hydraulic Pump**



## ASSEMBLY

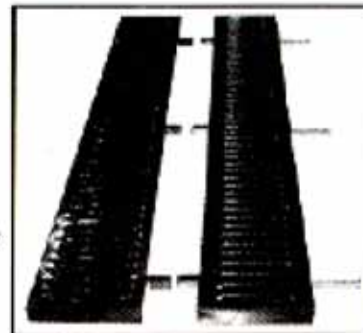
Using **Figure 1** (page 2) or **Figure 2** (page 3) follow assembly instructions matching corresponding numbers (#'s) for reference.

1. Unpack the workstation making sure that all of the parts have been included.
2. Remove workstation from delivery pallet and place on concrete floor.
3. Take end of black hydraulic hose and attach to pneumatic/hydraulic pump (6).



**#6 Pneumatic/Hydraulic Pump**

4. Raise the workstation with pump pedal. **Note:** If workstation is not rising level check to make sure that wheels (10) are in their tracks.
5. Use the provided Allen wrench. Place in top of caster (3) and turn it clock- wise. Raise lift until it rolls freely. Raise all four casters.
6. Take shoulder (16) and slide inserts into deck plate (36). Next take three bolts (15) and bolt the shoulder (16) to the deck plate (36). Follow same step and bolt on the other shoulder (28).



7. Take ramp stands (43) and screw into bottom ramps (46) and (45). Next place ramps over matching holes on end of working station.



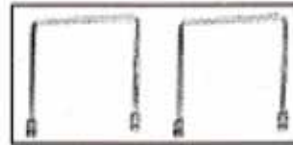
#43 Ramp Stand

#16 & #28 Shoulders



#45 & 46 Ramps

8. Take u-bolts (18 & 19) and install in ends of shoulders. Attach with nuts and washers (17).



#18 & 19 U-Bolts

9. Take base clamp (21) and bolt to deck plate (36) using bolts, nuts, and washers (22).



#21 Base Clamp

10. Take the blocks (24) and bolt them to the clamps (27) using bolts and lock-washers (23).



#27 Clamp

11. Slide block and clamp assembly into base clamp (21).



#25 & 26  
Handle & Screw Rod

12. Place screw rod (26) and handles (25) into grooves of clamp (27).

13. Place stands (29) on holes located on the end of the deck plate (36).
14. For three wheeled ATV's remove base clamp (21) and install u- bolt (18 & 19) to deck plate (36).
15. If you have access to compressed air, attach air nozzle to compressed air hose and raise workstation by pressing lever on air nozzle. Requires 70-160PSI.

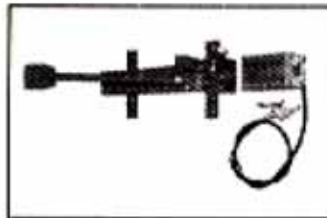
**Note:** The stands (29) are for holding up a motorcycle with rear wheel removed. (Straps not provided but should be used).

**Note:** Deck plate (33) can be moved for easy back wheel removal.

## **OPERATION**

1. Roll motorcycle onto deck plate (36) until wheel is inside clamp (27).

2. Use screw rod (26) and handles (25) to tighten the clamp (27) while holding front wheel steady.
3. To raise deck plate manually, pump foot pedal until you reach the height you want.
4. **WARNING:** Do not raise the deck plate higher than the warning arrows on side of base assembly (4) indicate.
5. To use compressed air, use airline trigger until you reach the height you want.
6. **IMPORTANT:** After reaching the height you want, move ball handle (13) all the way to the right, for your safety.
7. When finished working move ball handle (13) all the way to the left. And then step on small red pedal on pneumatic/hydraulic pump (6) to lower workstation.



#6 Pneumatic/Hydraulic Pump

**SAFETY WARNING:** Ball handle (13) should be moved all the way to the right when station is up so that station cannot come down. To lower station move ball handle (13) all the way to the left.

## **SAFETY PRECAUTIONS**

1. Read, study and understand all instructions and precautions. Failure to do so may result in personal injury and/or property damage.
2. Load should not exceed rated capacity for this lift: 1,500lbs.
3. Maintain a safe, clean working environment. Work area should be clutter free, clean, and dry.
4. Keep children and bystanders away from work area. Do not let children operate or play on lift.
5. Use this lift only for the work it is intended. Do not use this product for an application for which it was not designed. Misuse can lead to personal injury and/or property damage.
6. Wear proper attire when using this lift. Do not wear loose fitting clothing; long sleeves should be rolled up; hair should be worn in a protective covering to prevent long hair from becoming caught in moving parts.
7. Use proper safety attire. Wear safety glasses and fitted protective gloves when using this lift.

8. Do not use this product if worn or damaged. Examine for structural cracks, bends or other signs of damage. Check all hoses and connections before use to insure they are in good working condition.
9. Keep lift clean and dry for longevity of product.
10. Do not use if under the influence of drugs or alcohol. Must be alert at all times when using heavy lift equipment.
11. Keep hands, feet and other extremities away from moving parts. Remain clear of the lift when raising or lowering.
12. Never operate the lift with someone on it.



### **WARNING**



The warnings, precautions and instructions in this manual cannot cover all possible conditions and situations that may occur. The operator must understand that the operator must supply common sense and examine caution factors when using this product to determine safety in all circumstances being used.