



Thank you for choosing the Redline 500HWC

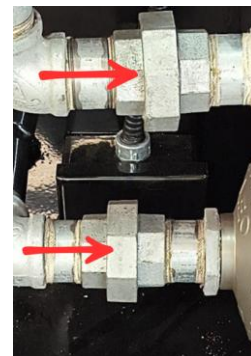
The lifeline of this machine is the pump. If the solution is too alkaline or the tank becomes too dirty, the pump seals will fail. The water needs to be changed every 75 hours of operation to prevent premature wear on the seals. If the solution becomes cloudy, thick, or has residue at the bottom of the tank, it's time to change the fluid. When changing the fluid, be sure to remove any sludge from the bottom of the tank by rinsing out the reservoir. Do not partially change the fluid. This allows sediment to remain in the tank and will cause sludge to build-up. It is recommended to remove any heavy grease or build-up from your workpiece prior to putting items in the parts washer. Following this ~75 hour water change rule will keep your pump running smoothly for years instead of months.

Instructions for changing the pump seal kit

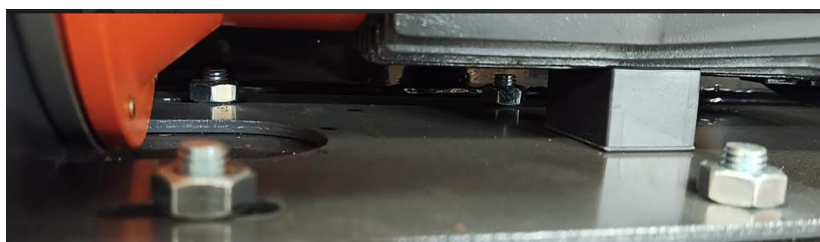


Disconnect the power from the machine

Start by loosening the pipe unions. The two small white/clear seals go here.



Next, we will need to remove the 17mm bolts that hold the pump to the frame. There are 4



Disconnect the pump from the motor by removing the 5mm bolts with an allen key. There are 8 in total.



Now you can remove the pump housing from the motor. The large O-ring goes between the pump and the housing.



The small black O-ring goes between the pump body and the guide vein.



On the motor side of the pump you will find a 17mm nut. Remove the nut.



Remove the impeller. You will find the seal underneath. Be careful not to lose the keyway.



Clean all parts of debris and grime and make sure all surfaces can make good clean contact. Add a very light coat of any all purpose grease to each seal as you put it back together. Just enough to soften and hold the seal.