

C7000 Installation Manual



Un Pack lift and check Inventory

1. 2 x Large lift posts with Carriage and cylinder installed



2. 4 x Lift arms



3. 1 x Power Unit 1 x Power Unit Dolly



4. 2 x Wheels for Power Unit Dolly



5. 1 x Flow Divider



6. 1 x Short Hose 2 x Long Hose



7. 2 x Hose Hooks for Large Posts



8. 12 x Floor Mounting Hardware



9. 4 x Arm Pins



10. 4 x Lifting Pads with Metal Base



11. 3 x Set of 4 Height/Truck Adapters



12. 4 x Arm Restraints

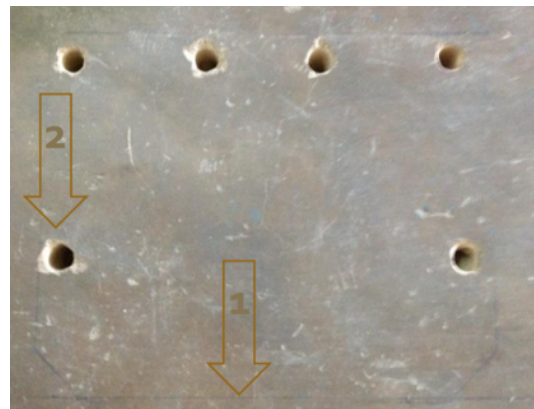
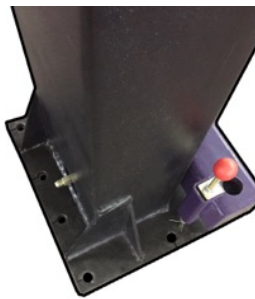


13. Hardware for mounting power unit, arm extension restraints, and top plate for posts.

If you are missing any parts or have damaged parts please call immediately for assistance.

Installation

- 1. Stand Large Posts up and In place. Mark holes using post as template. Drill pilot hole 3/8" to ensure proper alignment. Drill final holes 1" diameter and 4" deep. Do not drill more than 4" deep.**



- 2. Place inserts in holes with threaded female end up.**



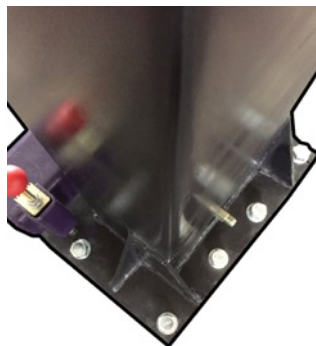
3. Drive inserts into holes with blunt hammer.



4. Expand inserts with driver to secure in hole



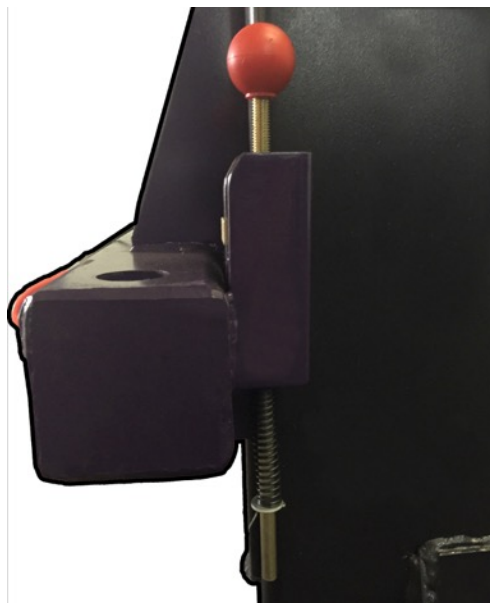
5. Move posts back into position over holes and insert bolts to secure posts to floor.



6. Ensure top plates are installed on posts and bolts are tightened.



7. Raise carriages in posts to working level for installing arm restraints.



8. Remove cotter pin, washer and spring from bottom of arm restraint. Please arm restraint on carriage in holder. Replace spring, washer and cotter pin on bottom of arm restraint. Nut and washer on arm restraint can be loosened and teeth adjusted to ensure proper grip of gear to gear between restraint and arm.
9. Place arms on carriage and insert arm pins to hold in place.



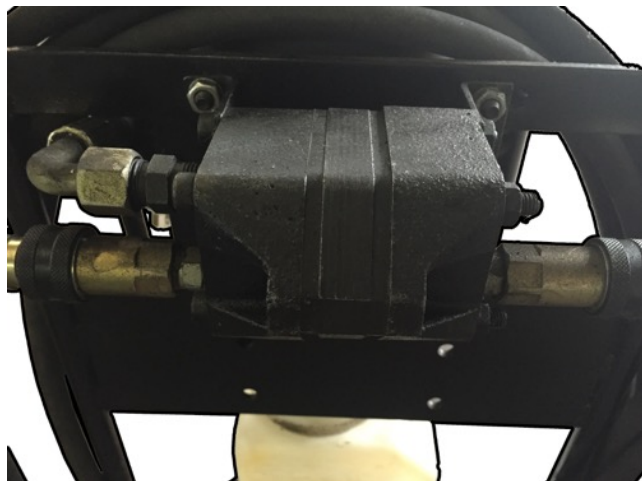
10. Ensure that arm restraint gear and arm gear have proper interlock and are functioning.



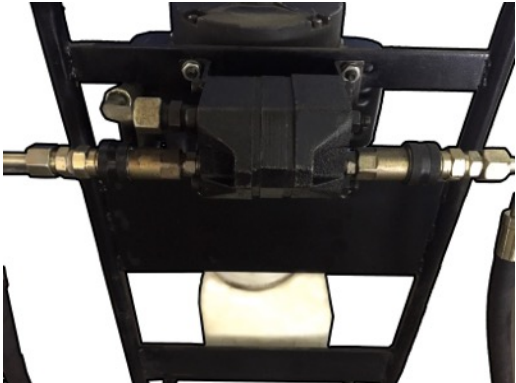
11. Install arm extension restraint bolts.



12. Mount Power unit and flow divider to dolly.



13. Connect short hose from power unit to flow divider.
14. Connect large hoses to quick disconnect and each large post.



15. Fill power unit tank with Hydraulic Oil or ATF.
16. Ensure that chain and roller are in place on top of cylinder inside column before lifting.



17. Install 110v power on plug and connect to 30 amp breaker.

18. Lubricate the 4 corners inside posts with grease to ensure smooth movement of carriage.
19. Raise and lower lift 6-10 times to purge air from system before putting a vehicle on lift. Raise lift 1/4 way up then lower to ground. Raise lift 1/2 way up then lower to ground. Raise lift 3/4 way up then lower to ground. Raise lift fully then lower to ground. Repeat process until lift is raising fully and locks can be heard engaging synchronously. Let lift sit in lowered position for some time to allow air to leave fluid.

Operation and safety

1. Before lifting a vehicle please check the following.
 1. All 12 floor mount bolts are tight and there is no movement of post.
 2. Chain is properly in place over roller and cylinder.
 3. Raise Lift to first locking position and lower on to lock. The internal carriage locks engage automatically when raising the lift. You can hear a click when the lock passes each position.
 4. Check that arm restraints have proper interlock and are holding arms in position.
2. Lifting a vehicle.
 1. Place vehicle weight centered on lift posts. Each arm is rated to lift 25% of total capacity or 1,750 lbs.
 2. Ensure 4 arm pads are installed. Install height/truck adapters if necessary to avoid damage to body of vehicle.
 3. Raise lift until pads engage vehicle and stop. Check that pads are hitting proper lifting points on vehicle.
 4. Raise lift until wheels of vehicle are off floor. Stop and ensure vehicle is lifting level front to back and side to side.

5. Raise vehicle to desired working height. Lower vehicle down into locked position. Do not go under vehicle until lowered into locked position.
3. Lowering vehicle.
 1. Raise vehicle off locked position.
 2. Go to each post and pull lock release cable to disengage locks.



3. Lower vehicle all the way to ground for arm restraints to disengage.
4. Safety.
 1. Never Raise or lower vehicle with any person under, around, or in vehicle.
 2. Always check that vehicle does not exceed maximum lifting capacity. Take into account 6 lbs. per gallon of fuel in vehicle. Take into account any aftermarket additions to vehicle. Take into account any stored goods in or outside of vehicle.
 3. Always lower vehicle into locked position before walking under or around vehicle.
 4. Motor and Pump are not designed to start under pressure. Always lower lift to locked position before raising. Do not stop lifting and start again without lowering to locked position. Always start raising vehicle from ground or locked position.
 5. Do not exceed 115" between posts when mounting.

