

Challenger Lifts



Model#: CLHM-135

Wireless / Battery Powered
Mobile Column Lifting System
13,500 lb. per column lifting capacity

CLHMseries
Mobile Column Lifting System

mobile HD
HEAVY-DUTY LIFTING SOLUTIONS

Our Heavy-Duty mobile lifting system along with optional sets of accessory support stands will accommodate multiple bays with one lift system. Robust yet easily maneuverable mobile columns can be operated on almost any solid surface, in-doors or out.

Challenger mobile lifts provide the flexibility and convenience to lift any rubber tired vehicle, from small passenger cars to the largest two, three or four axle vehicles up to 148,000 pounds, without taking up an entire bay. Our Heavy-Duty mobile lifts are also capable of lifting vehicles of any axle length or wheelbase.

Models are available in 13,500 or 18,500 lb. capacity columns, wireless, battery, and hydraulic operated with adjustable carriages.



Mechanical Lock Ladder

25 heavy-duty safety locks every 2-1/2" allow technicians to work at an ergonomic height to increase productivity and minimize fatigue.



Wireless Operation

Wireless system for clutter free work area without cables to connect, navigate around, roll-over or replace

Green/Yellow Warning Lights

Easy lock-ready identification

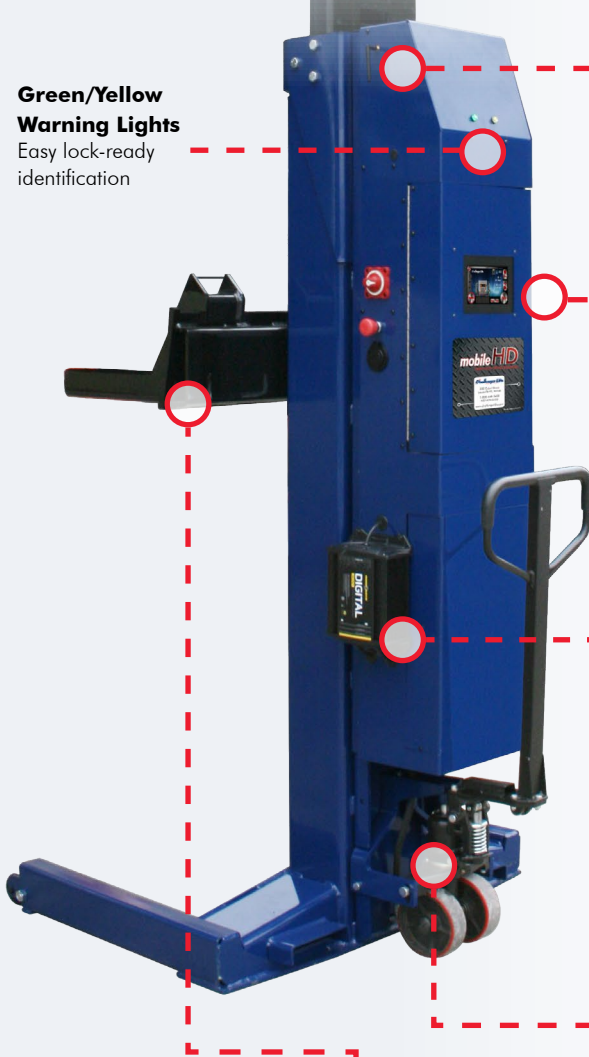


Android Based Integrated Touch Screen Control Console

The integrated touch screen control console provides easy-to-use controls and precise measurements of lifting height and lifting weight per column.

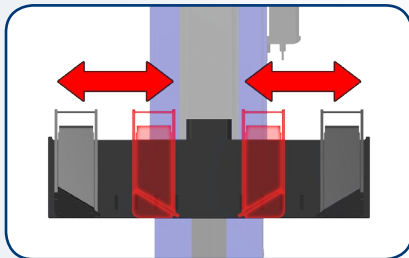
Integrated Charging System

110V built in multi-stage charging system for battery, wireless operation



Adjustable Carriage Assembly

The carriage assembly has adjustable arms designed with a positive grip no-skid pattern that prevents movement between the tire and the carriage arms. The carriage assembly is adjustable to 5 different positions.



Heavy-Duty Tow Dolly

Heavy-duty tow handle and spring loaded wheels make moving and aligning individual lift units simple and easy with little effort allowing for tight radius turns



Features & Benefits:

- Hydraulic operated units provide lifting capacity from 27,000/37,000 (set of 2) to 108,000/148,000 lbs. (set of 8) enabling lifting from small passenger cars to heavy-duty trucks, transit, and municipality vehicles
- 110 volt built in multi-stage charging system
- Wireless system for clutter free work area without cables to connect, navigate, roll-over or replace
- Adjustable wheel carriage
- 12 radio frequencies with a channel range from 100-120 for each frequency to prevent radio noise from interrupting service
- Linear position transducers maintains system synchronization and ensures maximum reliability
- Integrated touch screen control console provides easy-to-use and precise operating
- Precise balanced design, heavy-duty tow handle and spring loaded wheels make moving and aligning individual lift units simple
- Battery operated with 12 volt deep cycle batteries eliminates the need for power source hook-ups and provide 24 volt operation.
- Integrated weight gauges help prevent column overloading and verifies lock engagement

Optional Accessories:

20-32"



CLHM-10-TH
Short Support Stand
20,000 lb. capacity each, 1" adjustment increments (1 pair)

30-52"



CLHM-10-THF
Med. Support Stand
20,000 lb. capacity each, 1" adjustment increments (1 pair)

53-72"



CLHM-7-THR
HIGH-RISE Support Stand with Gas Assist
14,000 lb. capacity each, 2-3/4" adjustment increments (1 stand)

53-72"



CLHM-10-THR
HIGH-RISE Support Stand with Gas Assist
20,000 lb. capacity each, 2-3/4" adjustment increments (1 stand)



CLHM-ELA-90A
End Lift Adapter
9,000 lb. capacity (per column) used to support vehicle from front and back *Designed specifically for Humvee lifting



CLHM-CB-32A
Cross Beam Adapter
32,000 lb. capacity used to lift by frame rails



CLHM-LS-LK
Light Kit (pair)
Illuminate work areas under the vehicle. 2 lights per kit - 1 light per column



CLHM-FLA
Fork Lift Adapter
15,000 lb. capacity used to raise fork lift 64"



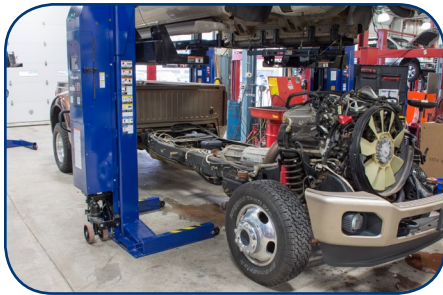
CLHM-HR-300
Clutch Jack
Air/hydraulic powered, 300 lbs. capacity, 360° rotating head, 80 1/2" max. lifting height



CLHM-HTCJ-2000
Transmission Jack
2,700 lbs. capacity, 30" start height, max. height of 69", 360° rotating head with fore and aft tilt, 1st stage power: 100% air, 2nd stage power: air/hydraulic for precise control



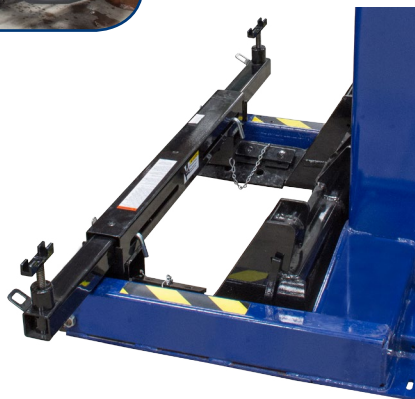
CLHM-WDH-12
Wheel Dolly
1,200 lbs. capacity, max lifting height of 51", air assisted hydraulic power system, flexible design works with super single & dual wheel assemblies, combines fore/aft & side to side tilt adj.



NEW!
Cab-Off Adapter
Cab-off vehicle maintenance now has an efficient, safe solution! Adjustable in length to accommodate 2 and 4 door trucks.

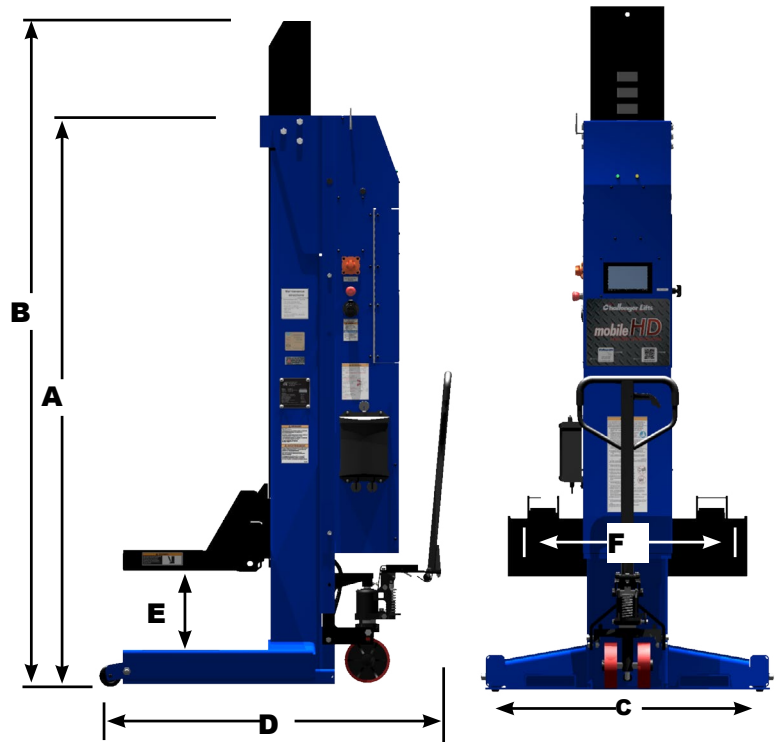


Height Adapters
Features 3" and 6" height adapters to reach the most difficult lift points!



Model Number	CLHM-135	CLHM-185	CLHM-185W
Lifting Capacity Per Column ¹	13,500 lbs (6124kg)	18,500 lbs (8391kg)	18,500 lbs (8391kg)
A Height of Lift Unit	88-1/2" (2248mm)	88-1/2" (2248mm)	88-1/2" (2248mm)
B Height of Lift Unit at Full Rise	157-1/8" (3991mm)	157-1/8" (3991mm)	157-1/8" (3991mm)
C Width of Lift Unit	44-1/4" (1124mm)	44-1/4" (1124mm)	49" (1245mm)
D Length of Lift Unit	53-5/8" (1362mm)	53-5/8" (1362mm)	53-5/8" (1362mm)
E Maximum Lift Height (4 or more units)	69" (1753mm)	69" (1753mm)	69" (1753mm)
Maximum Lift Height (2 units - Normal Mode)	32" (813mm)	32" (813mm)	32" (813mm)
F Min-Max Wheel Diameter ²	5" - 24-1/2" (127 - 622mm)	5" - 24-1/2" (127 - 622mm)	4" - Max determined by tire diameter (102mm-)
Max. Hydraulic System Operating Pressure	2,180 psi	3,000 psi	3,000 psi
Lift Speed (Max Load)	60" (1524mm) per Min	60" (1524mm) per Min	60" (1524mm) per Min
Weight of Lift Unit	1,485 lbs (674kg)	1,500 lbs (680kg)	1,565 lbs (710kg)
Footprint of Lift Unit	425" ² (10795mm ²)	560" ² (14224mm ²)	600" ² (387096mm ²)
Ground Pressure for each Lift (Max. Load)	35.3 psi	35.7 psi	33.4 psi
Turning Radius of Lift Unit	47" (1194mm)	47" (1194mm)	47" (1194mm)
Operating Peak Power	4 hp	4 hp	4 hp
Operating Voltage	24 VDC Nominal	24 VDC Nominal	24 VDC Nominal
Charger Voltage Required	120 VAC @ 60 Hz	120 VAC @ 60 Hz	120 VAC @ 60 Hz
Charger Amps Required	2.5 Amps	2.5 Amps	2.5 Amps

* CLHM series Wireless/Battery Operated Mobile Columns available in 2, 4, 6 and 8 column configurations with 13,500 lb. and 18,500 lb. per column capacity.
¹ Multiply number of columns by "Lifting Capacity Per Column" to calculate overall lifting capacity of configuration



For more information, contact your Authorized Challenger Lifts Distributor.

The Automotive Lift Institute (ALI) certifies that the CLHM series described herein comply with the applicable provisions of the American National Standards ANS/AU ALCVT 2011 and are Third Party Validated by the ETL Testing Laboratory.



Challenger Lifts, Inc. reserves the right to make changes to specifications without notice and without making changes retroactive. Unloading, installation and oil not included.

CHALLENGER LIFTS, INC.
 2311 South Park Rd.
 Louisville, Kentucky 40219

Phone Toll-Free: 800-648-5438
 502-625-0700
 Fax: 502-625-0711
 E-mail: sales@challengelifts.com