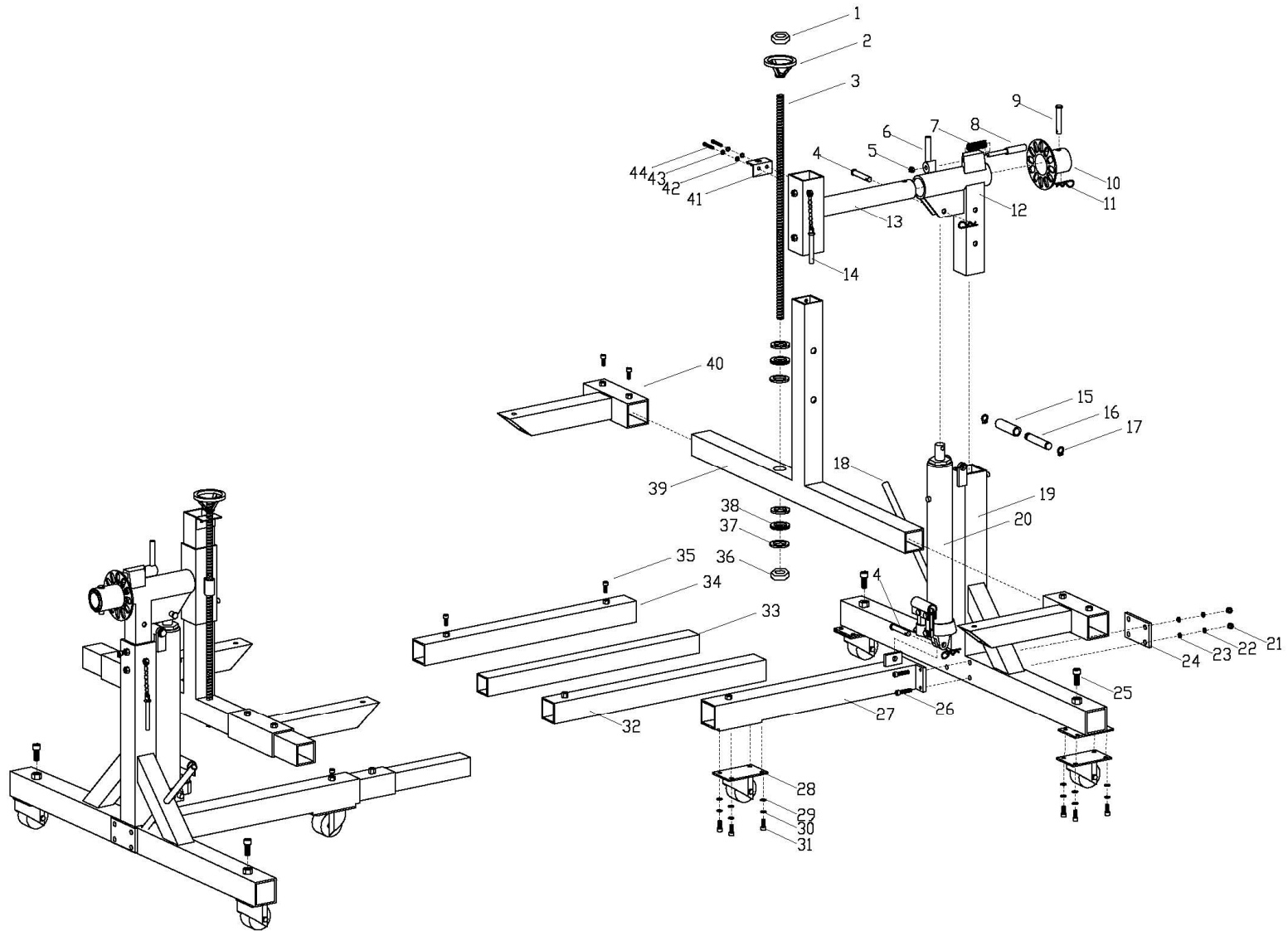




# KERNEL 157011- CR3000

Kernel Edition 2.0  
Mar.2016



# Parts List

ITEM	CODE	DESCRIPTION	QTY
1	157011*01-001	Lock Nut M12	2
2	157011*01-002	Adjustable Club	2
3	157011*01-003	Adjust Screw Rod	2
4	157011*01-004	Cylinder Pin	4
5	157011*01-005	Lock Washer M8	2
6	157011*01-006	Wedge Handle	2
7	157011*01-007	Spring	2
8	157011*01-008	Lock Pin	2
9	157011*01-009	Connecting Pin	2
10	157011*01-010	Locking Plate	2
11	157011*01-011	R-Pin	6
12	157011*01-012	Lifting Stand	2
13	157011*01-013	Rotating Stand	2
14	157011*01-014	Locking Pin	4
15	157011*01-015	Guide Sleeve	2
16	157011*01-016	Guide Spindle	2
17	157011*01-017	Circlip	4
18	157011*01-018	Operation handle	2
19	157011*01-019	Main Stand	2
20	157011*01-020	Hydraulic Cylinder	2
21	157011*01-021	Nut M10	8
22	157011*01-022	Lock Washer M10	24
23	157011*01-023	Washer M10	24
24	157011*01-024	Plate	2
25	157011*01-025	Bolt M20	4
26	157011*01-026	Bolt M10	8
27	157011*01-027	Main Connecting Rod	2
28	157011*01-028	3"Caster	6
29	157011*01-029	Washer M8	24
30	157011*01-030	Lock Washer	24
31	157011*01-031	Bolt M8	24
32	157011*01-032	Connecting Rod	2
33	157011*01-033	Extending Rod	2
34	157011*01-034	Intermediate Connecting Rod	1
35	157011*01-035	Nut M10	22
36	157011*01-036	Lock Nut M16	2
37	157011*01-037	Washer	8
38	157011*01-038	Bearing	4
39	157011*01-039	Stand	2
40	157011*01-040	Movable Stand	4
41	157011*01-041	Screw Rod Stand	2
42	157011*01-042	Washer M6	4
43	157011*01-043	Lock Washer M6	4
44	157011*01-044	Nut M6	4

Mar 2016