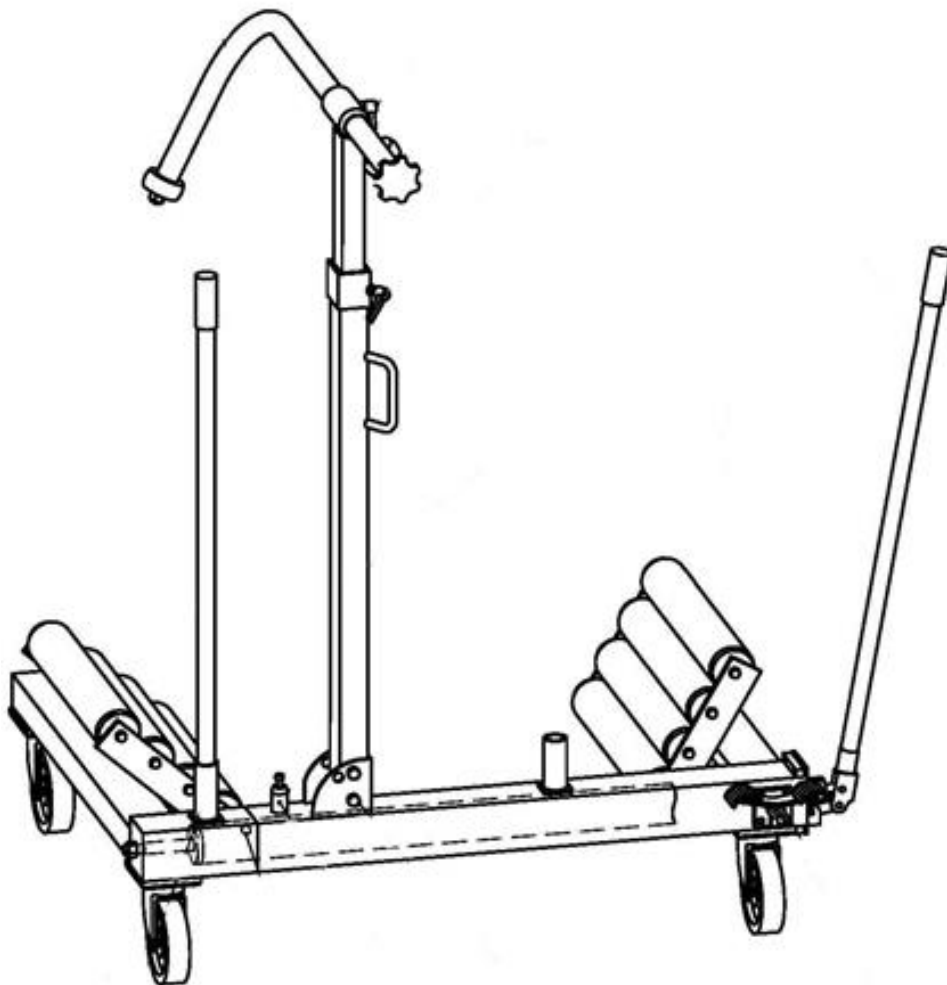




DUAL WHEEL DOLLY OPERATING INSTRUCTION



1. INTRODUCTION

The Professional Dual Wheel Dolly is designed for effortless, fast and safe removal, handling and fitting of agricultural, industrial and commercial wheels. The Dual Wheel Dolly's lifting action is achieved using a two stage hydraulic pump mounted inside the frame. The wheel to be handled is lifted on two tables of rollers, one mounted on each leg. The hydraulic pump draws the legs together under the wheel so that the wheel is lifted by the rollers and a safety lock applied. The wheel is balanced securely using the integral wheel support before operated.

PRODUCT SPECIFICATION

Maximum Capacity: 1500Kg

Dimensions: 1310*980*1270

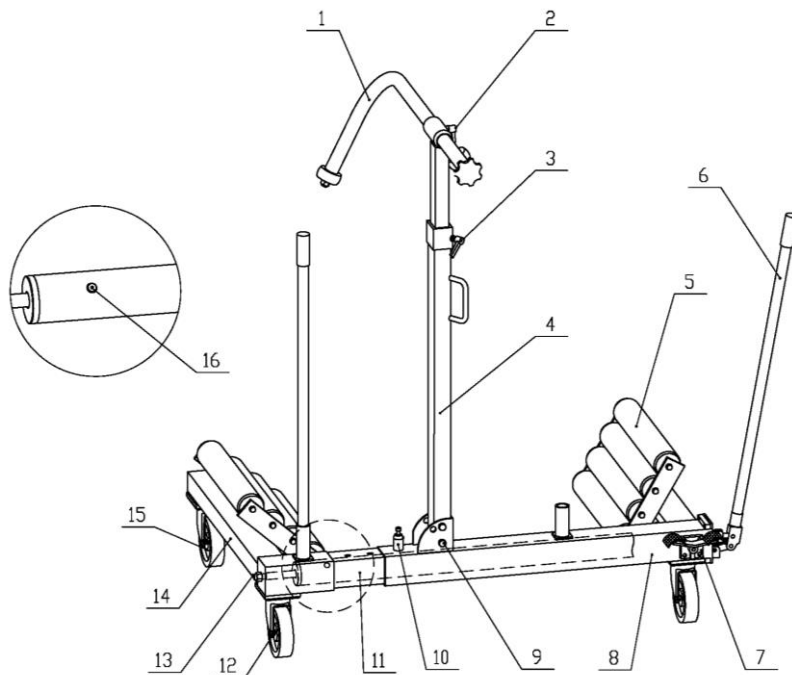
Weight: 125Kg

Minimum wheel diameter: 1000mm

Maximum wheel diameter: 2200mm

Maximum wheel width: 800mm

The angle of each wheel support can be adjusted by the removal of pin (NO.8) to accommodate different wheel configurations.



No.	Part	NO.	Part
1	Clamp Support Arm	9	Pin
2	Lock Arm	10	Lock Pin
3	Lock Arm	11	Link Rod
4	Support Arm	12	Castor(with lock)
5	Roller Table	13	Nut
6	Pump Lever	14	Left frame parts

7	Handle	15	Castor(without lock)
8	Right frame parts	16	Oil Plug

2. SAFETY



To avoid personal injury or property damage, please follow all safety precautions. The manufacturer cannot be responsible for injury or damage resulting from unsafe and incorrect products use or system operation, or lack of maintenance.

DANGER is only used when your action or lack of action may cause serious injury or even death.

WARNING indicates a potential danger that requires correct action to avoid personal injury.

IMPORTANT indicates correct action to prevent damage or equipment failure.



DANGER

- Danger from unsecured load, The operator must ensure that Wheels to be carried by the machine are correctly loaded and supported in accordance with the operating instructions.
- To avoid personal injury, please do not modify or weld hydraulic equipment without approved by manufacturer
- Always use the locking mechanism which locks the lifting rollers in position before operate the loaded Dual Wheel Dolly.
- Potential slip/fall hazard. Never stand or ride on the Dual Wheel Dolly when working with the Machine.



WARNING

- The operator should be experienced and in good health to avoid danger to himself and others.
- Never use the Dual Wheel Dolly unit for wheels of larger diameter. Wider or heavier than those stipulated in the technical specification.
- The Support Arm (NO.4) and Clamp Support Arm (NO.1) are only to be used to balance the wheel, NOT to carry a load!
- The Dual Wheel Dolly unit must only be used on horizontal workshop floors. Swept dean of any debris, the use of the unit on a sloping surface is absolutely forbidden.
- Never drive the unit over edges, rough surfaces, or corners etc. When there is a load on it as the whole unit can overturn.
- It is of the greatest importance for safety that the unit is secured by the locking Pin (NO.9) on the nearest hole before operating the unit. If this lock is not used, the Dual Wheel Dolly could come apart while carrying the load and the wheel could tip out.
- Always stand and operate the unit from behind the Support Arm (NO.4).
- Do not operate or move the wheel from in front of the Clamp Support Arm (NO.1).
- When refilling the oil reservoir, the unit must be pumped fully apart before the Oil Reservoir Plug (NO.10) is removed otherwise there is a risk of excess pressure in the reservoir which can cause oil to squirt out when the refill screw is loosened.
- Please use manufacturer oil or other approved hydraulic oil.

- For hydraulic technical help or repair service. Please contact the Service Center in your area. Manufacturer has no obligations under any warranty with respect to products that have been repaired by unauthorized personnel, modified, or damaged through misuse, abuse, accident, neglect, or mishandling.

IMPORTANT

- The operator must be in good health with good Sight and hearing and the physical ability to carry out all operations required.
- The operator must understand how the machine works. Be responsible when operating the machine and aware of potential danger.
- The operator must have read this booklet and fully understand the warning symbols on the machine.
- Please keep the equipment clean all the time.
- When the equipment is not in use, fully release the pressure.

3. INSTRUCTION

3.1 Using the Dual Wheel Dolly to remove a wheel

Position the vehicle on a suitable horizontal floor, applying the break. Jack up the axle of the wheel to be changed, with a suitable trolley jack, so that it is clear of the floor. Secure with axle stands.

1. Using the Dual Wheel Dolly. Unlock the pin (NO.9), then press the control pedal (NO.7) to A position Pump apart the Dual Wheel Dolly with the pump lever (NO.6) to make the Roller Table (NO.5) in to right position.

2. Adjust the wheel support Arm (NO.4) so that the clamp support arm (NO.1) is positioned over the wheel to be handled.

3. Push the Dual Wheel Dolly unit under the wheel so that the roller tables are positioned either side of the wheel and that the wheel sits up against the vertical wheel support Arm (NO.4).

5. Lower clamp support arm (NO.1) behind the wheel and adjust until the wheel is vertical and can be moved approx 5cm sideways. This will allow the wheel to be rotated in the Dual Wheel Dolly when re-locating wheel studs. Lock the clamp support arm in position by tightening lock Arm (NO.2 and NO.3).

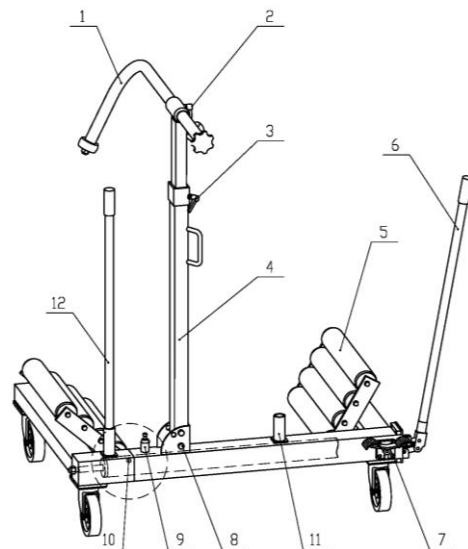
WARNING! WHEEL SUPPORT ARM (NO.4) AND CLAMP SUPPORT ARM (NO.1) ARE ONLY USED TO BALANCE THE WHEEL NOT TO CARRY A LOAD!

6. Press the control pedal (NO.7) to B position. Lift the wheel by pumping the level (NO.6). When the wheel is positioned on the unit the Dual Wheel Dolly must be secured in the lifting position with the lock Pin (NO.9).

• **IMPORTANT: Ensure that lock Pin (NO.9) is secured through the nearest location hole on the inner member. This prevents unintentional lowering of the wheel while it is being handled.**

7. With the wheel nuts removed, the wheel can now be safely carried away on the Dual Wheel Dolly.

8. Put Pump Level (NO.6) into Socket (NO.11) used same as a handle as (NO.12), thus the whole machine can be pushed to move.



3.2 Unloading the Dual Wheel Dolly

When the wheel is located on the wheel studs and secured with wheel nuts or the wheel has been moved to a place for storage, the wheel can be released.

1. Lift and release the locking Pin (NO.9).
2. Press the Control pedal (NO.7) to the A position. Operate the pump lever (NO.6).
3. Loosen Clamp Support Arm (NO.1) by releasing Lock arm (NO.2 and NO.3).
4. Adjust the Support Arm (NO.4) so that it does not catch on the top of the wheel. Then move the Dual wheel dolly.

5. REFILLING THE HYDRAULIC OIL

For best results, change fluid every 8 working hours:

When refilling the hydraulic oil reservoir, pump the Dual Wheel Dolly until the lifting rollers are to their widest possible. Then remove the Oil Reservoir Plug (NO.10) and fill the oil (ISO VG13) into the reservoir.