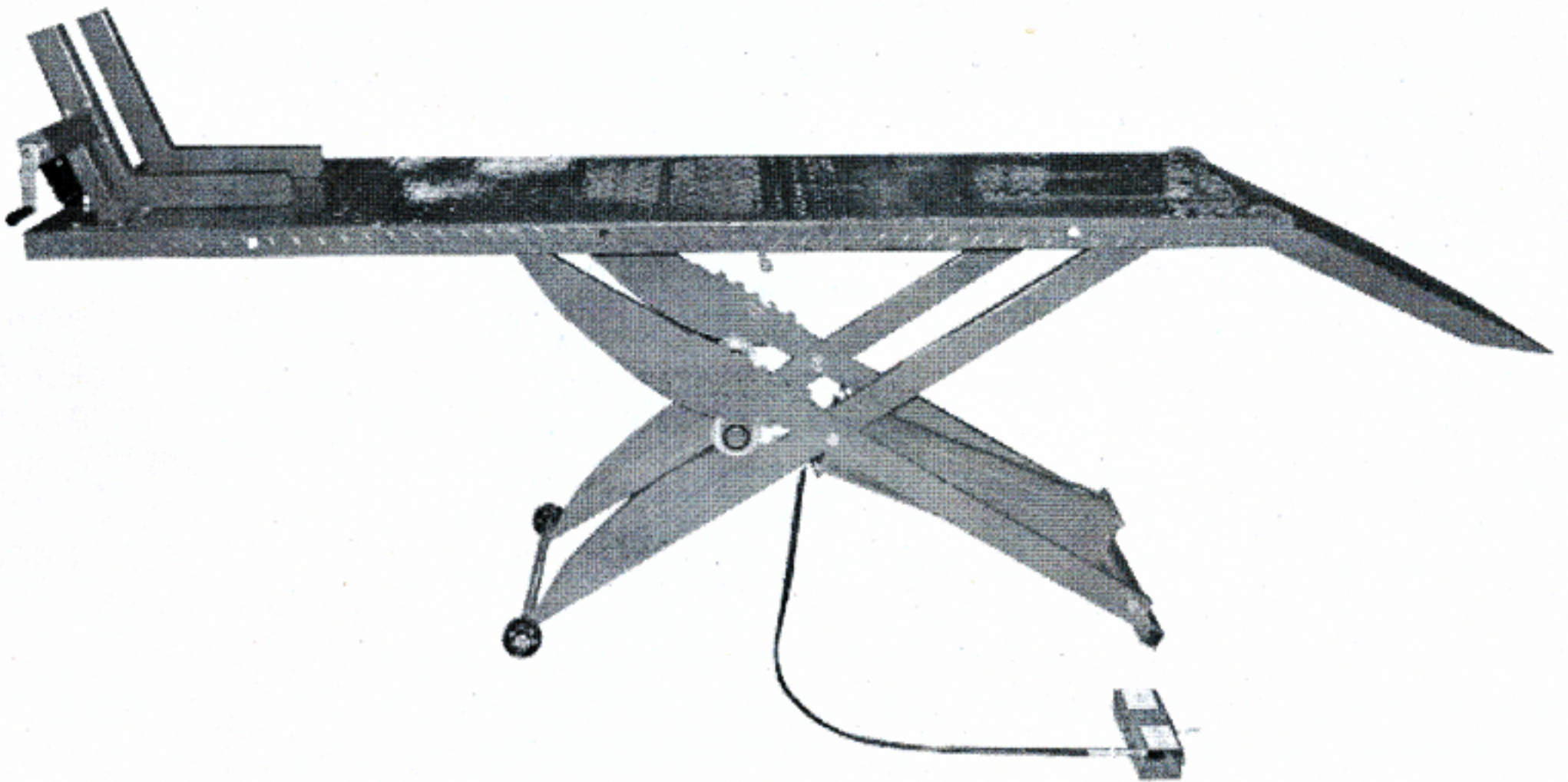


**1000 LBS**

# **AIR MOTORCYCLE LIFT**



**Instruction Manual**

Please read this instruction manual carefully before use.



## IMPORTANT

**PLEASE READ THESE INSTRUCTIONS CAREFULLY. NOTE THE SAFETY INSTRUCTIONS AND WARNINGS. USE THE PRODUCT CORRECTLY AND WITH CARE FOR THE PURPOSE FOR WHICH IT IS INTENDED. FAILURE TO DO SO MAY CAUSE DAMAGE TO PROPERTY AND/OR SERIOUS PERSONAL INJURY. PLEASE KEEP THIS INSTRUCTION MANUAL SAFE FOR FUTURE USE.**

## 1. SAFETY INSTRUCTIONS AND WARNINGS

- 1.1 Use a qualified person to maintain the lift in good condition. Keep it clean for best and safest performance.
- 1.2 The maximum load is 1000lbs, **DO NOT** exceed this rated capacity.
- 1.3 Connect the foot-operated air valve to maximum 100psi air supply, **DO NOT** exceed this rated air pressure.
- 1.4 Use this lift for lifting purpose only. **DO NOT** use it for any other purpose it is not designed to perform.
- 1.5 Keep children and unauthorized persons away from the work area.
- 1.6 Remove loose clothing. Remove ties, watches, rings and other loose jewelry, and contain long hair.
- 1.7 Wear ANSI approved safety goggles when operating the lift.
- 1.8 **DO NOT** mount table when in elevated position.
- 1.9. Foot operated air valve should be at least 3 feet away from air lift during raising and lowering operation.
- 1.10 Only use this lift on a surface that is stable, level, dry and not slippery, and capable of sustaining the load. Keep the surface clean, tidy and free from unrelated materials and ensure that there is adequate lighting.
- 1.11 Before lifting motorcycle ensure the weight of the motorcycle has been fully supported by the lift platform. **DO NOT put the rear wheel of the motorcycle on the ramp and DO NOT use the ramp to support the weight of the motorcycle when lifting.** The ramp is only used to help you to wheel the motorcycle onto the platform when the lift is at its lowest position.
- 1.12 **DO NOT** ride vehicle onto lift. Ensure the motorcycle is adequately secured to the lifting platform with appropriate straps before lifting.
- 1.13 Keep the safety bar (11) in position all times expect lowering the lift.
- 1.14 Before lowering lift ensure that there are no obstructions underneath and that all persons are standing clear.
- 1.15 Always keep your hands and feet away from moving parts.
- 1.16 The lift must be in the lowered position when moving. **DO NOT** attempt to transport a load on the lift.
- 1.17 **DO NOT** use the lift if damaged, any suspect parts are noted or it has been subjected to a shock load.
- 1.18 **DO NOT** operate the lift when you are tired or under the influence of alcohol, drugs or any intoxicating medication.
- 1.19 **DO NOT** allow untrained persons to operate the lift.
- 1.20 **DO NOT** make any modifications to the lift.
- 1.21 Recommend for indoor use only, **DO NOT** expose the lift to rain, snow or excessive moisture.
- 1.22 If the lift need repairing and/or there are any parts which need to be replaced, have it repaired by authorized technicians and only use the replacement parts supplied by the manufacturer.

**WARNING:** the warnings, cautions and instructions discussed in this instruction manual cannot cover all possible conditions and situations that may occur. It must be understood by the operator that common sense and caution are factors which cannot be built into this product, but must be supplied by the operator.

## 2. SPECIFICATIONS

Capacity .....	1000lb (454kg)	Width .....	24" (610mm)
Length .....	78-3/4" (2000mm)	Min Height.....	7-1/16" (180mm)
Max Height .....	32-9/32" (820mm)	Air pressure .....	90-100PSI
Air inlet fitting.....	1/4 Inch NPT		

## 3. ASSEMBLY

Use the exploded drawing as your guide to assemble. Lay all parts and assemblies out in front of you before beginning, the following procedure is recommended. Should there be any damage or missing parts, contact your supplier immediately.

- 3.1 Attach the ramp (10) to the end of the platform.



- 3.2 Place the removable plate (9) to the platform (8) to cover the rear wheel removal aperture.
- 3.3 Assemble stop plate (1) and wheel vise assemblies (6,7) to the front of the platform using bolts (2), washers (29) and nuts (27).
- 3.4 Connect foot-operated air valve (48) to a maximum 100psi air supply.

## 4. BEFORE EACH USE

- 4.1 Check and make sure the four stay bolts (30) are tight.
- 4.2 Check and ensure the clevis pins (12) are secured on the safety bar.
- 4.3 Check and ensure the wheels (50) are in their tracks.

## 5. OPERATING INSTRUCTIONS

**WARNING! Loads must be centered on platform at all times.**

**WARNING! Loads must be firmly positioned and secured on table at all times.**

- 5.1 Position the lift in a suitable area, checking that the surface on which the lift will stand is solid and flat (preferably concrete).
- 5.2 First, raise the lift to about 20 centimeter height, then pull down the safety bar, raise the lift to see if the safety bar can raise along with the lift smoothly and make sure it falls into corresponding slot to stop the lift.
- 5.3 Wheel the motorcycle up the ramp and onto the platform.
- 5.4 Clamp front wheel in vise to prevent any movement of the motorcycle.
- 5.5 Strap the motorcycle securely to the platform.
- 5.6 Stand clear of the lift table and depress the UP side of foot valve to raise the lift.
- 5.7 After raise the lift to desired working height, make sure the safety bar falls into corresponding slot to prevent accidental lowering.
- 5.8 When work is done, pull the safety bar free from its locking position and make sure it is locked in its original position under the platform, then depress the DOWN side of foot valve to lower the lift to next position or to floor.

## 6. MAINTAINANCE

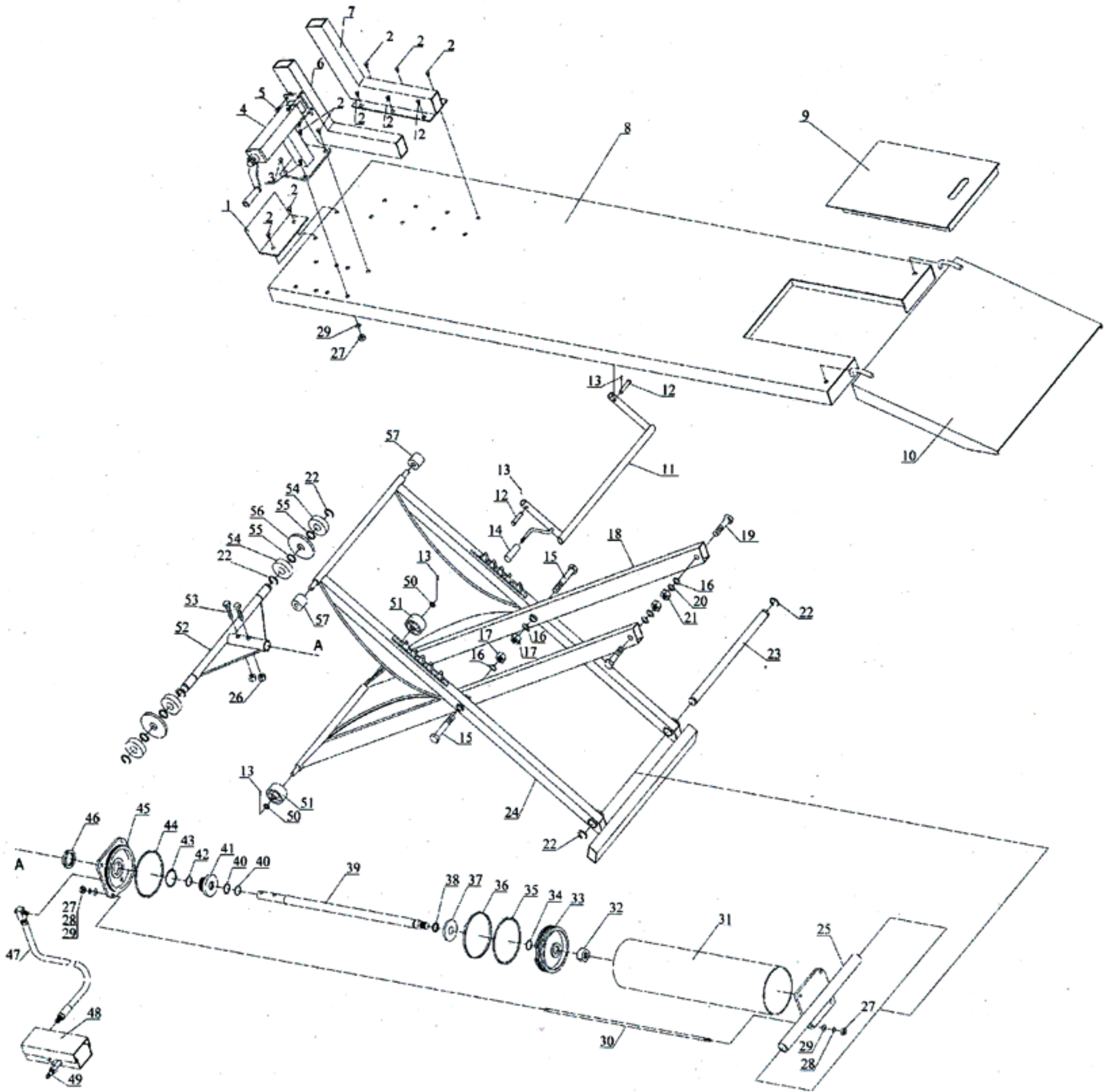
- 6.1 Use only clean, dry air.
- 6.2 When not in use, the lift must be stored in the lowest position in a dry location.
- 6.3 Keep the lift clean and wipe off any oil or grease. Lubricate all moving parts.
- 6.4 Before each use check all parts. If any part of the lift is damaged or suspect, remove the lift from service and take necessary action to repair.
- 6.5 All moving parts should be lubricated every month to prevent galling.
- 6.6 The four stay bolts should be checked frequently to be sure they are tight.
- 6.7 Lightly oil piston rod when it becomes dry.
- 6.8 Lubricate piston and its seal every month as following procedures: first, fully raise the lift and pull down the safety bar to lock the lift, then disconnect foot-operated air valve, add some oil into the cylinder through an air bleed hole in the front cover (45) of cylinder.
- 6.9 All bolts and screws should be checked frequently to be sure they are tight.

## PARTS LIST

Part No.	Description	Qty	Part No.	Description	Qty	Part No.	Description	Qty
1	Stop plate	1	11	Detent bar	1	21	Nut M16	2
2	Bolt M10x20	10	12	Clevis pin	2	22	Retaining ring	6
3	Bolt M10x25	2	13	R-pin	4	23	Frame/Cylinder pivot shaft	1
4	Adjustable shelf	1	14	Handle socket	1	24	Lifting arm	1
5	Bolt M8x12	4	15	Bolt M16x100	2	25	Cylinder end plate	1
6	Movable vise assy	1	16	Washer Ø16	4	26	Lock nut M10	2
7	Stationary vise assy	1	17	Lock nut M16	2	27	Nut M10	20
8	Platform	1	18	Lifting arm	1	28	Lock washer Ø10	6
9	Removable plate	1	19	Bolt M16x70	2	29	Washer Ø10	20
10	Ramp	1	20	Lock washer Ø16	2	30	Stay bolt	4



# EXPLODED DRAWING



## PARTS LIST (CONTINUED)

Part No.	Description	Qty	Part No.	Description	Qty	Part No.	Description	Qty
31	Cylinder	1	40	O-Ring	2	49	Air hose connector	1
32	Nut M20	1	41	Shaft bushing	1	50	Washer Ø12	2
33	Piston	1	42	Dust proof ring	1	51	Wheel	2
34	O-Ring	1	43	O-Ring	1	52	Connection	1
35	O-Ring	1	44	O-Ring	1	53	Bolt M10x45	2
36	Seal ring	1	45	Front cover	1	54	Cam roller bearing	4
37	Press ring	1	46	Nut	1	55	Washer	4
38	Retaining ring	1	47	Air hose	1	56	Cam bearing spacer	2
39	Piston rod	1	48	Foot-operated air valve	1	57	Roller	2