

CAR MINI LIFT

3000LBS

INSTRUCTION MANUAL



Read this
material before
using this
product
Failure to do so
can result in
serious injury.
**SAVE THIS
MANUAL.**

NOTE: BEFORE
USING THIS

EQUIPMENT, PLEASE READ THIS MANUAL, UNDERSTAND ITS OPERATING PROCEDURES, SAFETY WARNINGS AND MAINTENANCE OF THIS EQUIPMENT.

Carefully inspect all components for shipping damage. If shipping damage is found, notify carrier at once. The carrier is responsible for any damage resulting from shipment.

1. SAFETY



To avoid personal injury or property damage, please follow all safety precautions. We cannot be responsible for injury or damage resulting from unsafe and incorrect products use or system operation, or lack of

maintenance.

WARNING indicates a potential danger that requires correct action to avoid personal injury.

IMPORTANT indicates correct action to prevent damage or equipment failure.



WARNING

- The hydraulic equipment operator must be a qualified operator familiar with correct training and work experience of hydraulic equipment. Lack of knowledge in any of these areas can lead to equipment damage or personal injury.
- Read, understand, and follow all instructions before operating this equipment.
- Inspect the equipment before each use. Do not use equipment if damaged, altered, modified, leaking hydraulic fluid or with missing or loose components.
- To avoid personal injury, never modify or weld hydraulic equipment.
- Never lift more than the rated capacity of the equipment, overloading causes equipment failure and possible personal injury.
- Always wear safety glasses and/or other protective equipment that meet or exceed ANSI Z87.1 and OSHA standards.
- Use the jack ONLY on hard, level surfaces capable of sustaining the load. Use on other surface

IMPORTANT

- Keep the equipment clean at all time.
- When the equipment is not in use, make the lift arm fully down to the lowest position.
- Use hydraulic equipment in normal operating temperatures. Do not use equipment in temperatures of 65 °C (150°F) or higher. Overheating will soften seals and weakens hose material, resulting in oil leaking or other equipment failure.

2. DESCRIPTION

Specification: 3000LB Car Lift

Rated capacity: 3000Lbs

Maximum Height: 785mm

Min Height: 50mm

Air Working Pressure: 0.8 MPA

Weight: 102KGS.

3. OPERATION

3.1 Lift

Connect the air pump (NO.14) with 0.8 MPA air source.

Move the lift to the wheel; make sure the wheel in the center of the lift arm (NO.54)

Press the foot pedal in pump position (NO.14), to lift the arm to required height.

Insert safety pin (NO.35) into safety lock hole on the Supporter (NO.15)

3.2 After use

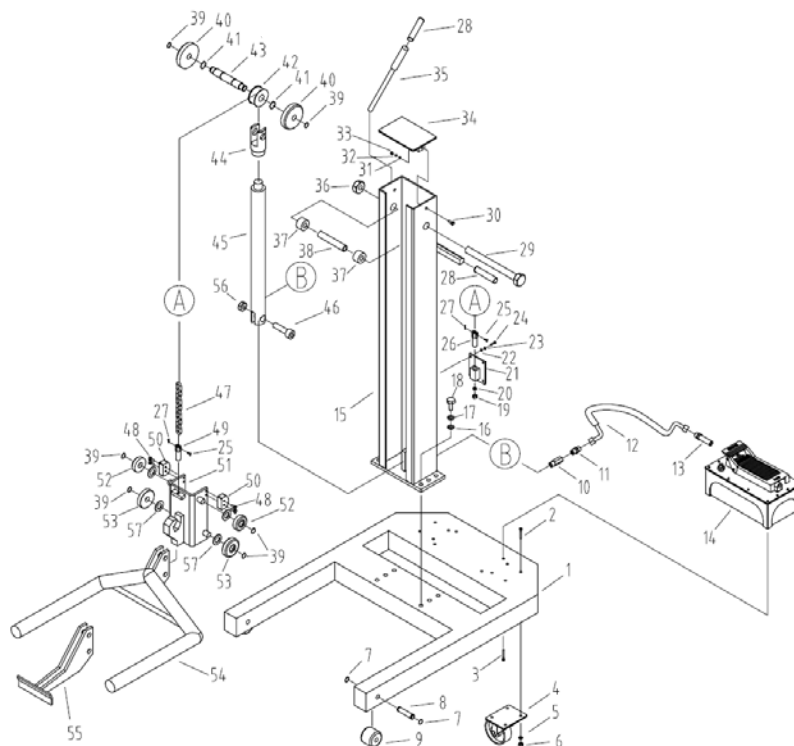
Pull out the safety pin (NO.35) from the supporter (NO.15).

Slow press the foot pedal in release position (NO.14) to make the lift arm (NO.54) down
After the wheel fully support the car, move the lift arm from the wheel.



WARNING

- DO NOT exceed the rated capacity-3000LBS.
- DO NOT stand under the work place when the lift is working.
- This Lift is mainly for lifting; user only can underwork when safety Pin is inserted into Safety Lock Hole.
- Make sure the surround situation is safe.



NO.	Description	Q'ty	NO.	Description	Q'ty
1	Base	1	31	Washer	2
2	Bolt	8	32	Washer	2
3	Bolt	4	33	Bolt	2
4	Universal Wheel	2	34	Plate	1
5	Washer	8	35	Safety Pin	1
6	Nut	8	36	Nut	1
7	Snap Ring	4	37	Limited	2
8	Wheel Shaft	2	38	Pin	1
9	Wheel	2	39	Snap ring	6
10	Control Valve	1	40	Shaft Wheel C	2
11	Coupler B	1	41	Snap ring	2
12	Hose	1	42	Trolley wheel	1

13	Coupler A	1	43	Shaft	1
14	Air Pump	1	44	Saddle	1
15	Supporter	1	45	Cylinder	1
16	Washer	6	46	Pin	1
17	Washer	6	47	Chain	1
18	Bolt	6	48	Bolt	4
19	Nut	1	49	Bolt	1
20	Washer	1	50	Plastic block	2
21	Plate	1	51	U plate	1
22	Washer	4	52	Shaft Wheel A	2
23	Washer	4	53	Shaft Wheel B	2
24	Bolt	4	54	Lift arm	1
25	Pin	2	55	Plate	1
26	Bolt A	1	56	Snap ring	2
27	Washer	2	57	Washer	4
28	Handle sleeve	3			
29	Long Bolt	1			
30	Bolt	2			