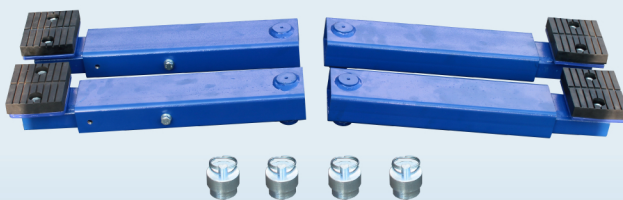


**6,600 LB.
Low RISE
PIT LIFT**

PL6K
Low rise
Pit lift



Optional: 4 arm kits



Features:

- ◆ 6,600 lb. lifting capacity
- ◆ Surface mounting
- ◆ Open center design
- ◆ Pneumatic lock release
- ◆ Low-profile
- ◆ Dual approach design
- ◆ Electric / hydraulic power system
- ◆ Heavy duty locking system with 15 positions
- ◆ High density rubber lifting blocks optional
- ◆ No crossmember
- ◆ Gear driven valve for smoother lifting

SPECIFICATIONS:

	PL6K
Lifting capacity	6,600 lbs.
Lifting Height (Less Lift Blocks)	26-1/8"
Lifting Height (With Lift Blocks)	27-5/8"
Pad Length Overall	53"
Over Width	18"
Overall Length	83-1/4"
Lowered Height	4-1/4"
Motor	110-220V AC/60HZ
Shipping Weight	700 lbs.