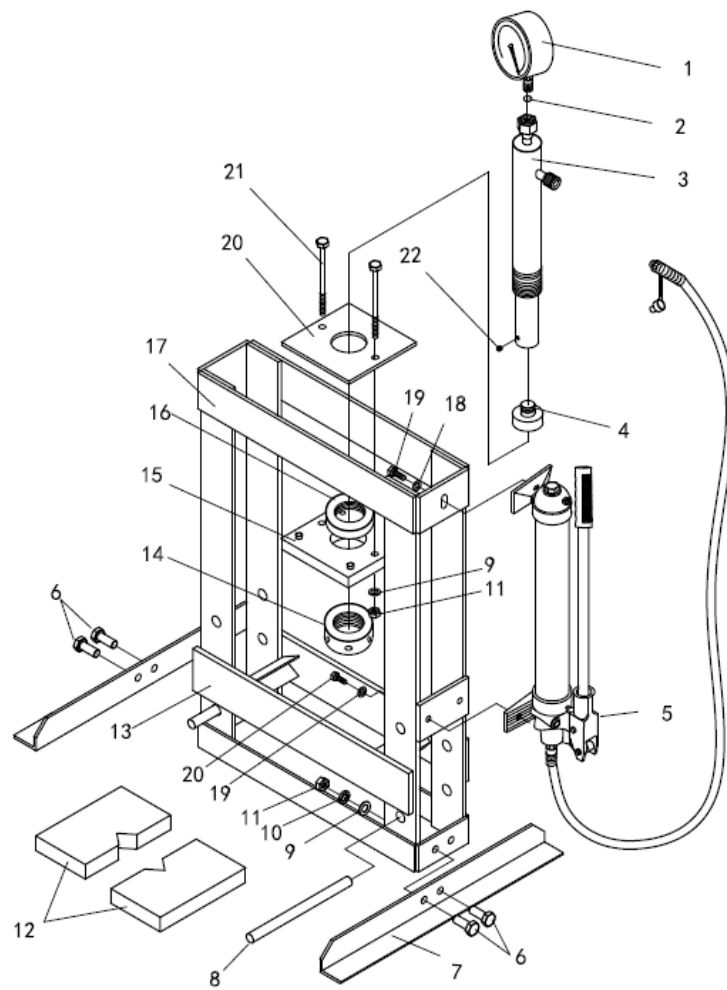


10 TON HYDRAULIC FLOOR PRESS



Make sure to read and fully understand the instruction manual before using this product and keep the manual properly

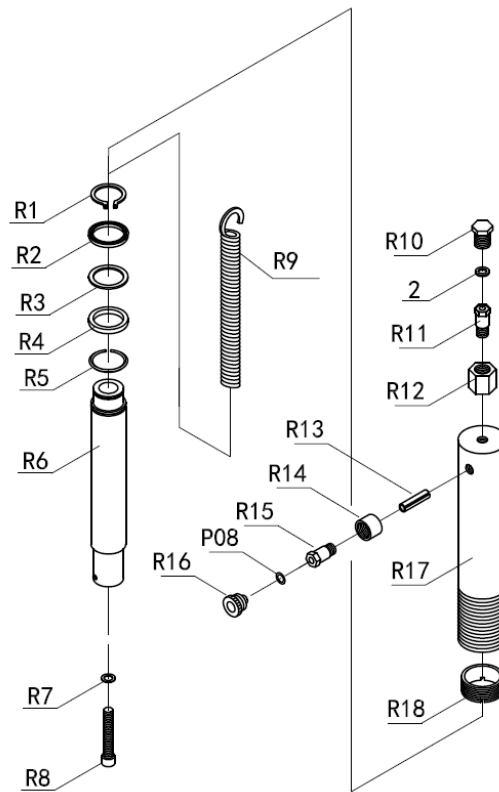
Whole Machine



Part List

Part No.	Description	Qty	Part No.	Description	Qty
1	Pressure Gauge	1	12	Heel Block	2
2	Nylon Ring	1	13	Press Plate Form	1
3	Ram	1	14	Under Round Nut	1
4	Serrated Saddle	1	15	Under Ram Plate	1
5	Pump	1	16	Up Round Nut	1
6	Bolt	4	17	Frame	1
7	Base Plate	2	18	Washer	3
8	Bed Frame Pin	2	19	Bolt	3
9	Washer	6	20	Ram Plate	1
10	Lock Washer	4	21	Bolt	2
11	Nut	6	22	Screw	1

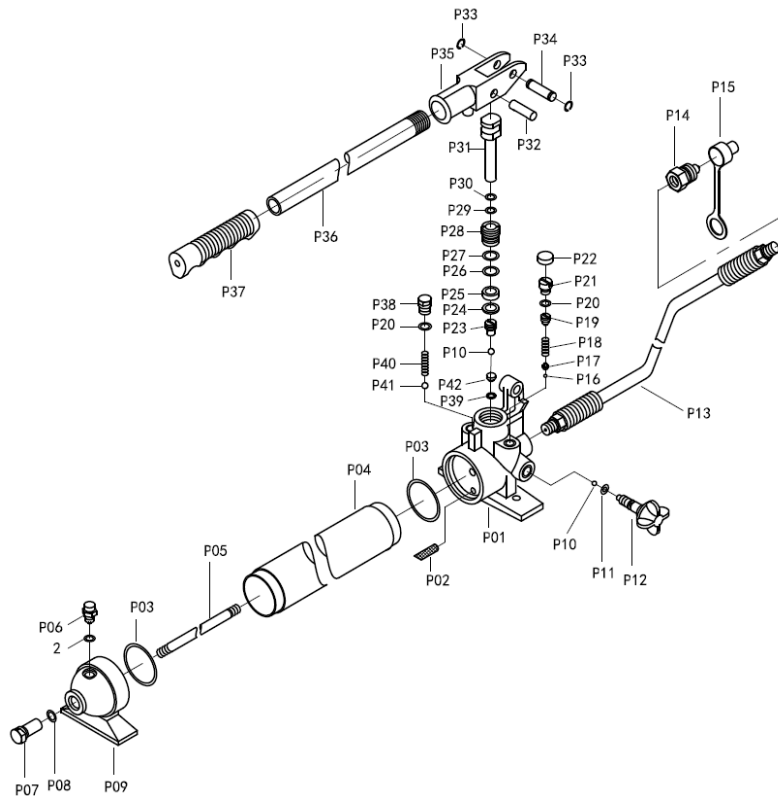
Ram



Part List

Part No.	Description	Qty	Part No.	Description	Qty
R1	Retaining Ring	1	R11	Gauge Joint Screw	1
R2	Sealing Ring	1	R12	Gauge Joint Nut	1
R3	PTFE Seal	1	R13	Pin	1
R4	Ring	1	R14	Gauge Joint	1
R5	Circlip	1	R15	Ram connector	1
R6	Piston Rod	1	R16	Dust Cap	1
R7	Copper Ring	1	R17	Ram	1
R8	Screw	1	R18	Limit Ring	1
R9	Spring	1	P08	O-ring	1
R10	Seal Bolt	1	2	Nylon Ring	1

Pump



Part List

Part No.	Description	Qty	Part No.	Description	Qty
P01	Pump	1	P23	Valve Cover	1
P02	Oil Filter	1	P24	Nylon Ring	1
P03	O-ring	2	P25	Seal Ring	1
P04	Reservoir	1	P26	O-ring	1
P05	Tie Rod	1	P27	Nylon Ring	1
P06	Screw	1	P28	Base for Pump Core	1
P07	Screw	1	P29	O-ring	1
P08	O-ring	1	P30	Nylon Ring	1
P09	Back Cover	1	P31	Pump Core	1
P10	Steel Ball	2	P32	Pin	1
P11	O-ring	1	P33	Retaining Ring	2
P12	Release Valve	1	P34	Pin	1
P13	Hydraulic Hose	1	P35	Base for Handle	1
P14	Coupler	1	P36	Handle	1
P15	Dust Cover	1	P37	Handle Sleeve	1
P16	Steel Ball	1	P38	Screw	1
P17	Base for Steel Ball	1	P39	Nylon Ring	1
P18	Spring	1	P40	Spring	1
P19	Screw	1	P41	Steel Ball	1
P20	O-ring	2	P42	Base for Valve	1
P21	Screw	1	2	Nylon Ring	1
P22	Plastic Cap	1			

A NOTE ON SAFETY

We've done all we can to assure this press offers the utmost in safety .But you have to do your part no amount of warning can take the place.Of your goods judgment ,so make sure it's the first thing you bring to any job byond that here are some obvious tips;

Steel and other materials can shatter ,so always use protective eye wear that complies with the appropriate ansi code.

If you detect anything that may indicate imminent structural failure ,stop using the press immediately and inspect it thoroughly.

Bolt the press to the floor if it's to be used on bulky or unsiable items

Do not use press to compress springs or any other item that could disengage and cause a potential hazard