

40 TON SHOP PRESS

Instruction Manual



Operation Manual

1. Important Information

1.1 Safety Information

1.1.1 Hazard Symbols Used in the Manuals

This manual includes the hazard symbols defined below when the operations or maintenance job involves a potential danger. These symbols describe the level of danger involved in performing a job on the tool and the precautions to take to avoid the hazard.

1.1.2 Safety Requirements

Important

Make sure to read, understand, and strictly follow all safety related instructions before operation or maintenance of this equipment.

Intended Users

This manual is to be made available to all persons who are required to install, configure or service equipment described herein, or any other associated operation.

Application Area

The machinery described is intended for machinery production and assembling spare parts. It is used to press, size, assemble, rivet small parts in process and not for other use.

Personnel

Installation, operation and maintenance of the equipment should be carried out by qualified personnel. A qualified person is someone who is technically competent and familiar with all safety information and established safety practices with the installation process, operation and maintenance of this equipment; and with all the hazards involved.

1.1.3 Safety Instruction



1. Before maintenance pressured parts in the machine, you **MUST** release the pressure in the pressured system. At the same time, **DO NOT** stand in the direction facing the charger, the operator should on the opposite side and remember **DO NOT** strike, press or transfer until it is discharged.

2. When it is necessary to exchange die after running, operators should wear glove or use tools to operate avoid being hurt.

NOTE: Immediately stop operating the equipment if not working properly. Contact a certified technical support engineers for repair. The equipment must not be operated without approval from the certified technical support engineer.

2.Specification

2.1 Application Area

The machinery described is intended for machinery production and assembling spare parts. It is used to press, size, assemble, rivet small parts in process and not for other use.

2.2 Mechanical part

No.	Item	Unit	Value
1	Capacity	Ton	40
2	Stroke	mm	180
3	Working Range	mm	8~988

4	Gross weight	Kg	246
---	--------------	----	-----

3. Prepare before using

3.1 Transport



The units are generally too heavy to be moved by hand. Therefore, use the correct transport and lifting equipment.

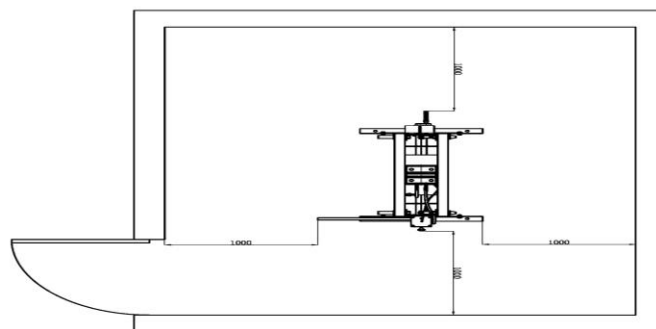
During moving the machine, please make sure to use the proper lifting equipment and follow the instructions as follows.

3.2 Working Area Conditions

Users should provide enough space for the equipment and the environment should be clean, non-flammable, corrosive and dust free.



A working area of 1,000mm is to be kept free both in front of and behind the machine while it is in operation so that it is always easily accessible.



3.3 Unpacking & Check



When open the packing, please make sure to use the proper tools, wear protective cloth, gloves, safety helmet

Make sure that the product and parts in box should be complete and identical with the part list. If not, please contact with the manufacturer in time.

4. Maintenance

Maintenance should be acted before daily working every day.

Clean the outside of the press with dry, clean and soft cloth and periodically lubricate the hoist, wheel shaft assembly, the joints and all moving parts with a light oil in normal service.

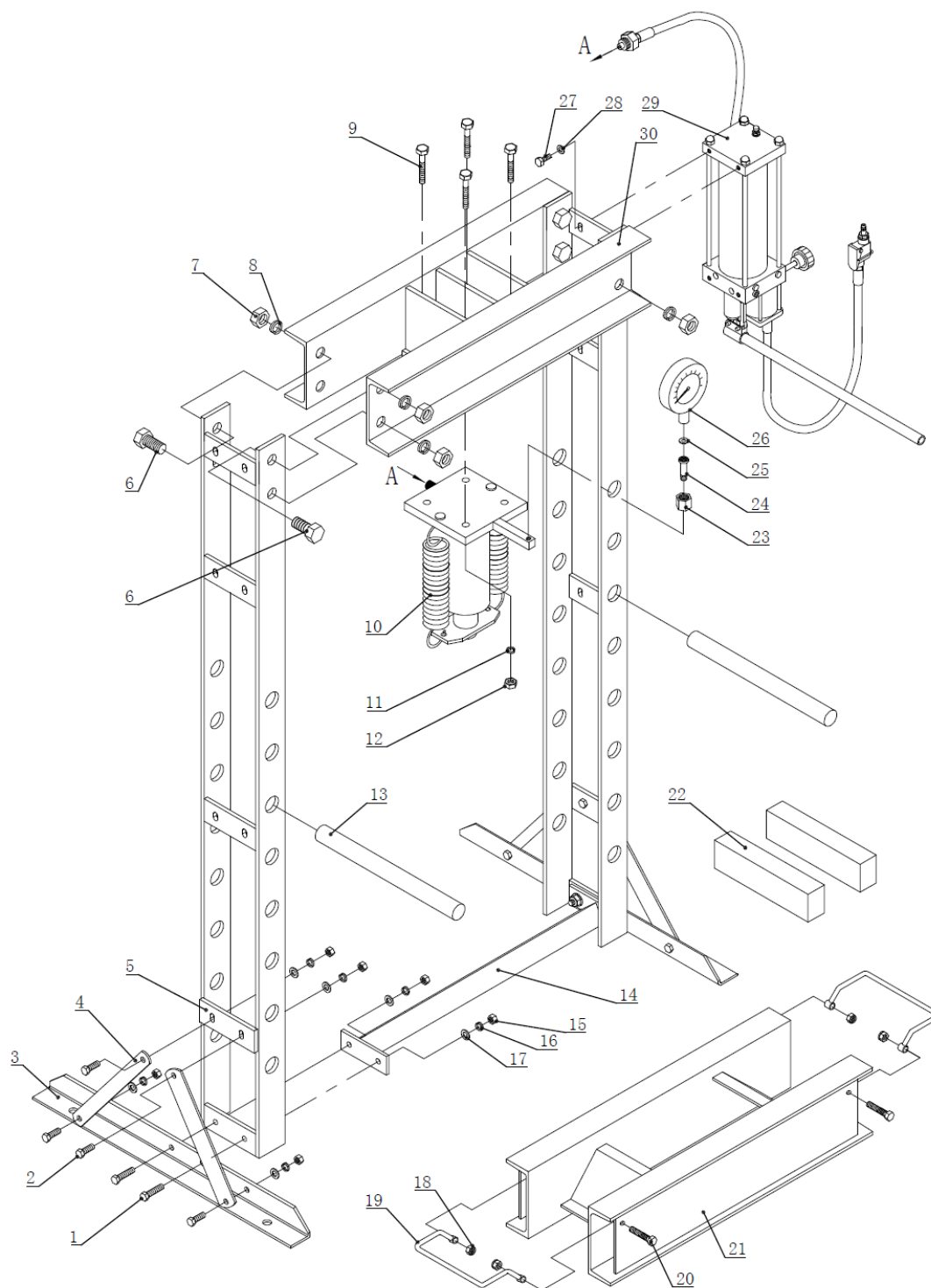
DO NOT allow lubricant to heel block nor frame of shop press.

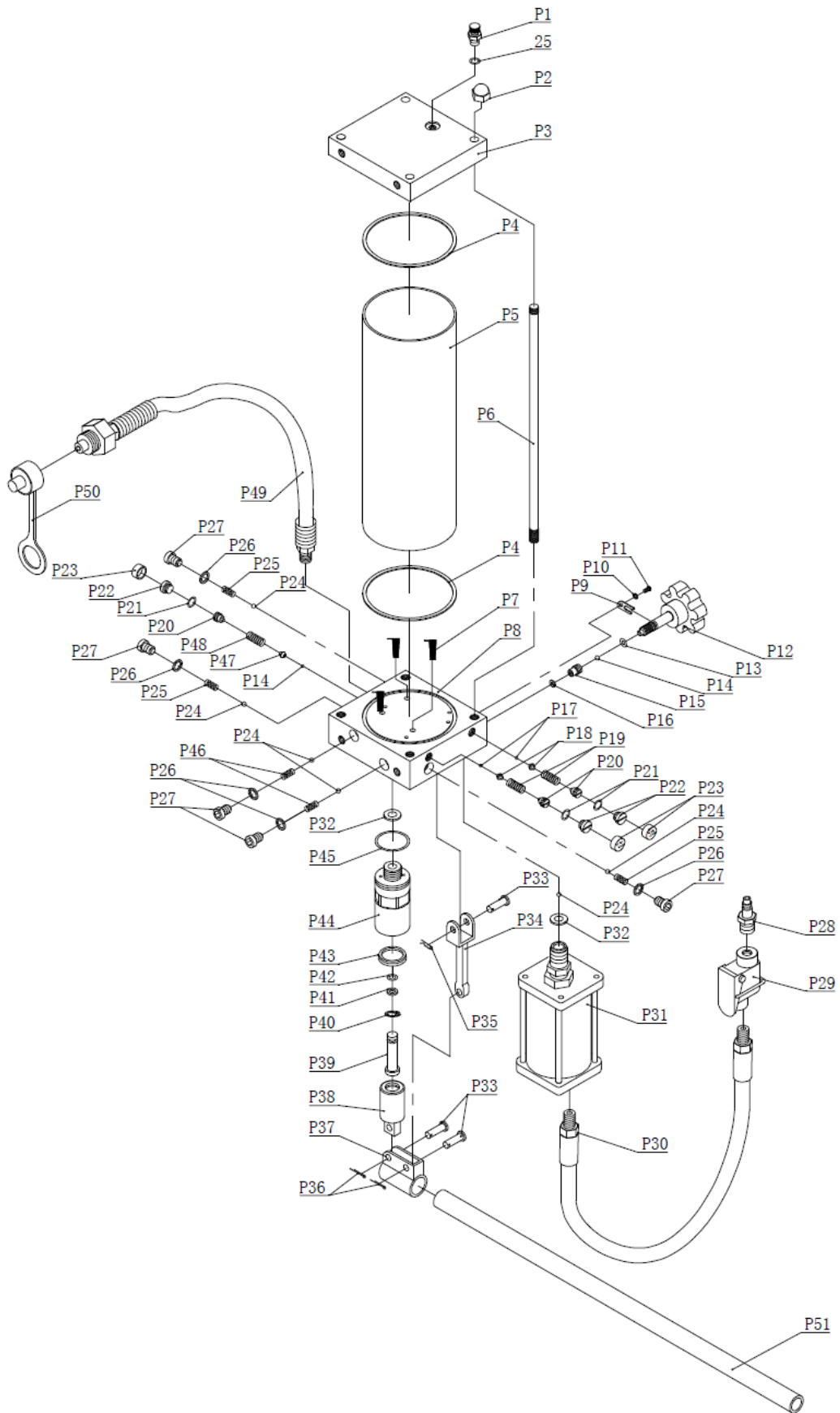
When not in use, store the press in a dry location with ram and piston fully retracted.

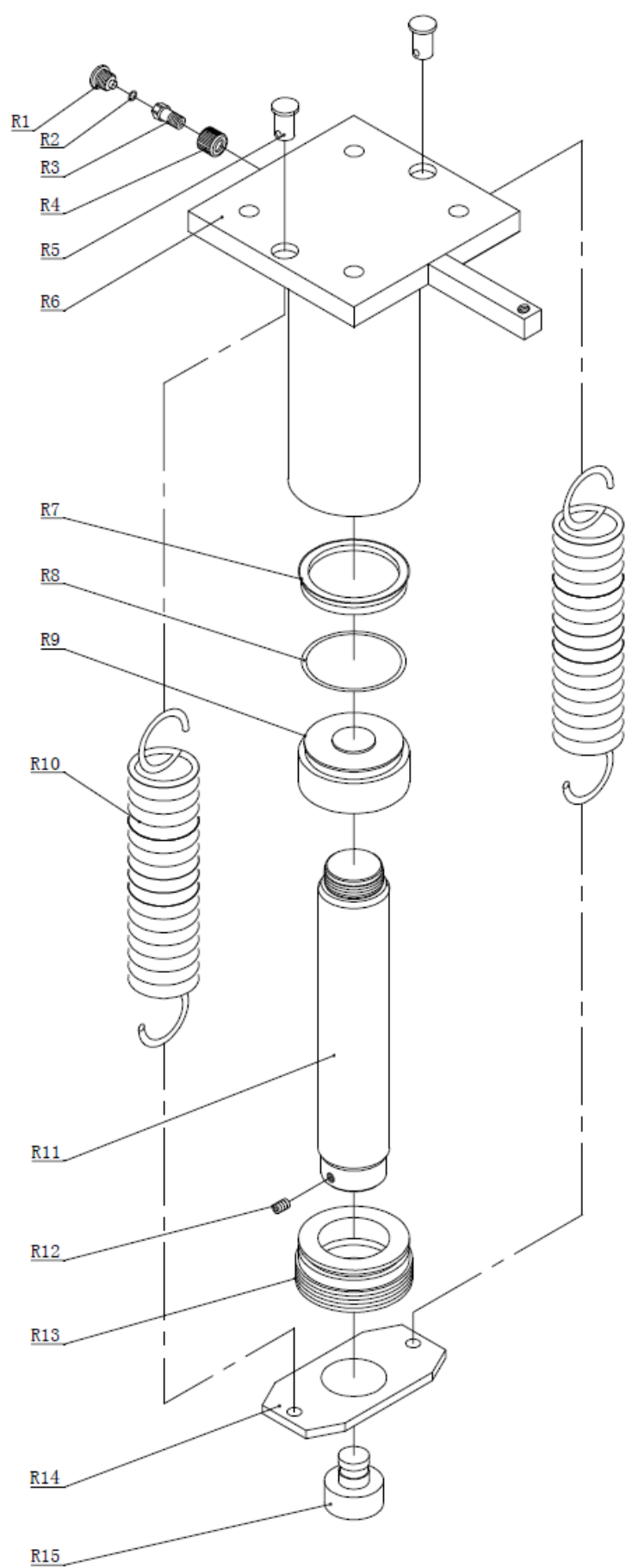
When press efficiency drops, purge away air from the hydraulic system as described before.

Check the hydraulic oil: remove the oil filler nut (on the top of the reservoir, if the oil is not adequate, fill with 22 # (ISO6743) hydraulic jack oil as necessary, then replace the oil filler nut, purge away air from the hydraulic system as described before.

The equipment must not be repaired or changed spare parts by whom without approval from the certified technical support engineer.







Part No.	Description	Qty.	Part No.	Description	Qty.
1	BOLT	4	16	LOCK WAHSER	12
2	BOLT	8	17	WASHER	12
3	BASE	2	18	NUT	4
4	BASE SUPPORT	4	19	WORKING TABLE HANDLE	2
5	FRAME	2	20	BOLT	4
6	BOLT	8	21	WORKING TABLE	1
7	NUT	8	22	STEEL BLOCK	2
8	LOCK WASHER	8	23	NUT	1
9	BOLT	4	24	Ram Connector	1
10	SPRING	1	25	NYLON WASHER	1
11	LOCK WASHER	4	26	GAUGE	1
12	NUT	4	27	BOLT	4
13	Frame Fixing Pin	2	28	WASHER	4
14	CROSS MEMBER	1	29	PUMP	1
15	NUT	12	30	UPPER CROSS BEAM	1

Part No.	Description	Qty.	Part No.	Description	Qty.
P01	HOSE NUT	1	P26	WASHER	5
25	NYLON RING	1	P27	BOLT	5
P02	NUT	4	P28	AIR CONNECT	1
P03	PUMP CAP	1	P29	AIR VALVE	1
P04	NYLON RING	2	P30	AIR HOSE	1
P05	OIL TANK	1	P31	AIR MOTOR	1
P06	PUMP ROD	4	P32	WASHER	2
P07	OIL FILLER	3	P33	PIN	3
P08	PUMP BASE	1	P34	CONNECTING ROD	1
P09	VALVE ROD LIMITED	1	P35	R PIN	1
P10	LOCK WASHER	1	P36	R PIN	2
P11	SCREW	1	P37	HANDLE SOCKET	1
P12	RELEASE VALVE	1	P38	BIG PISTON	1
P13	O RING	1	P39	SMALL PISTON	1
P14	BALL	2	P40	CLIP	1
P15	BALL BASE	1	P41	O RING	1
P16	WASHER	1	P42	O RING	1

P17	BALL	2	P43	SEAL RING	1
P18	BALL BASE	2	P44	PISTON SEAT	1
P19	SPRING	2	P45	SEAL RING	1
P20	SCREW	3	P46	SPRING	2
P21	O RING	3	P47	BALL BASE	1
P22	BOLT	3	P48	SPRING	1
P23	CAP	3	P49	OIL HOSE	1
P24	BALL	6	P50	DUST CAP	1
P25	SPRING	3	P51	HANDLE	1

Part No.	Description	Qty.	Part No.	Description	Qty.
R01	DUST CAP	1	R09	PISTON TOP	1
R02	O RING	1	R10	SPRING	2
R03	CONNECT	1	R11	PISTON	1
R04	NUT	1	R12	SCREW	1
R05	BOLT	2	R13	NUT	1
R06	RAM BASE	1	R14	SPRING PLATE	1
R07	O RING	1	R15	Serrated Saddle	1
R08	O RING	1			