

OWNER'S MANUAL

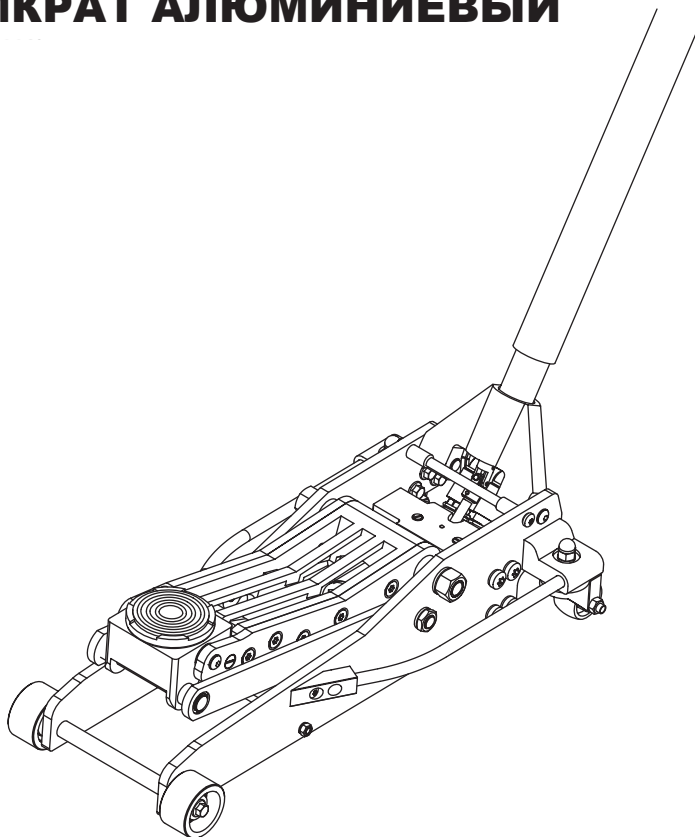
ALUMINUM RACING JACK

VÉRIN EN ALUMINIUM

GATO ALUMINIO

WAGENHEBER AUS ALUMINIUM

ДОМКРАТ АЛЮМИНИЕВЫЙ



▲ WARNING!

Read carefully and understand all ASSEMBLY AND OPERATION INSTRUCTIONS before operating. Failure to follow the safety rules and other basic safety precautions may result in serious personal injury.

INTENDED USE

This jack has a single hydraulic pump piston that effortlessly raises the lift arm. Pump piston dust shields and wiper seals protect the hydraulic system from contaminants. The jack features an overload valve bypass system to prevent jack damage and user injury. Compact design allows use in confined spaces. Easily fits under low vehicles.

TECHNICAL SPECIFICATIONS

Item	Capacity	Lifting Range Min. (Inch)	Lifting Range Max. (Inch)	Lifting Range Min. (mm)	Lifting Range Max. (mm)
T830003L	3 TON	3.86	18.9	98	480

GENERAL SAFETY RULES

- ⚠ WARNING:** Read and understand all instructions. Failure to follow all instructions listed below may result in serious injury.
- ⚠ CAUTION:** Do not allow persons to operate or assemble this jack until they have read this manual and have developed a thorough understanding of how the jack works.
- ⚠ WARNING:** The warnings, cautions, and instructions discussed in this instruction manual cannot cover all possible conditions or situations that could occur. It must be understood by the operator that common sense and caution are factors that cannot be built into this product, but must be supplied by the operator.

GENERAL SAFETY RULES IMPORTANT SAFETY CONSIDERATIONS

INSPECTION

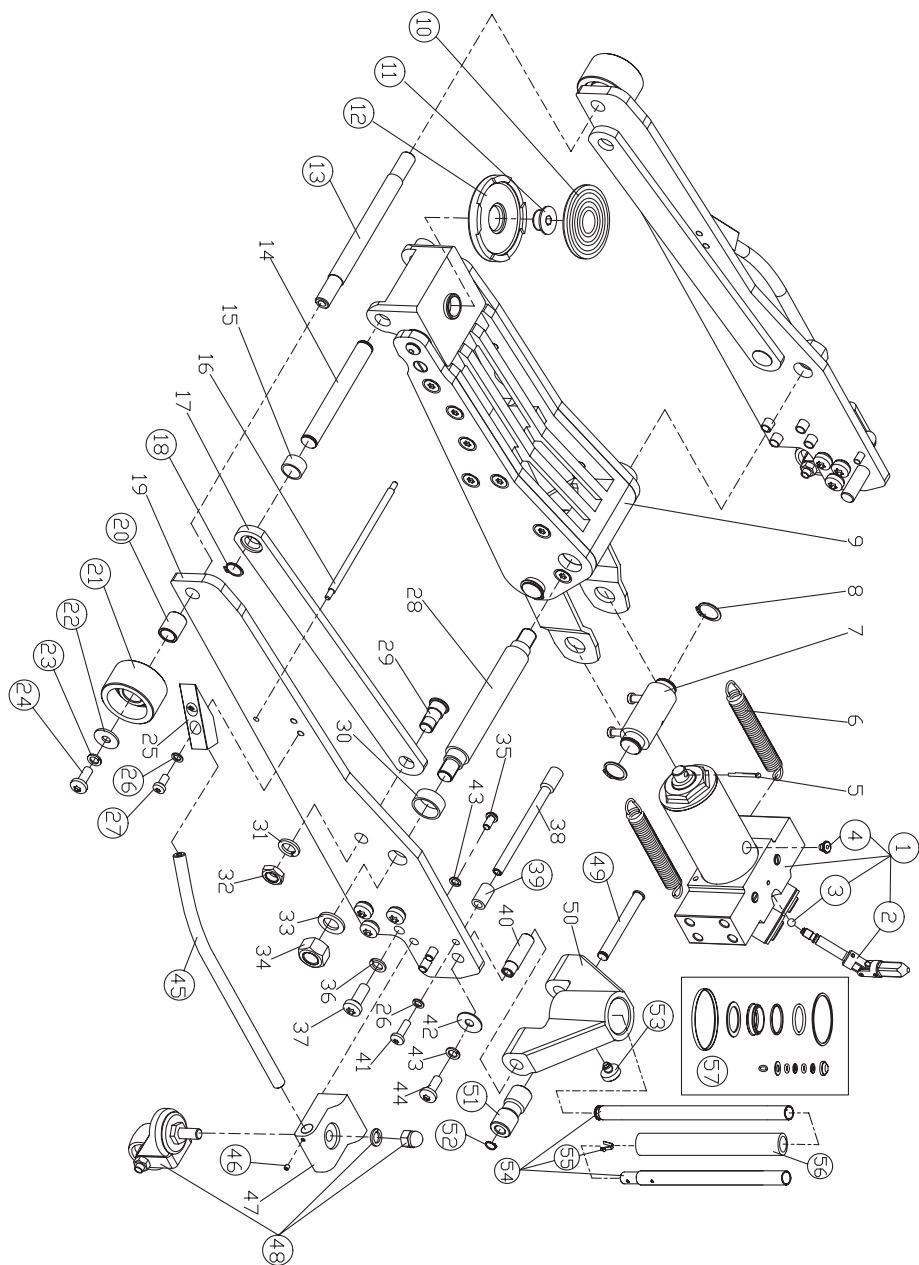
- Inspect the jack carefully before each use. Ensure the jack is not damaged, excessively worn, or missing parts.
- Do not use the jack unless it is properly lubricated.
- Using a jack that is not in good clean working condition or properly lubricated may cause serious injury.
- Inspect the work area before each use. Make sure it is free and clear of any potential hazards.

DO NOT OPERATE OR REPAIR THIS EQUIPMENT WITHOUT READING THIS MANUAL.

To maintain the Service Jack and user safety, the responsibility of the owner is to read and follow these instructions.

- Inspect the service jack for proper operation and function.
- Keep instructions readily available for equipment operators.
- Make certain all equipment operators are properly trained; understand how to safely and correctly operate the unit.
- Allow unit operation only with all parts in place and operating properly.
- Use only genuine replacement parts.
- Service and maintain the unit only with authorized or approved replacement parts; negligence will make the jack unsafe for use and void the warranty.
- Carefully inspect the unit on a regular basis and perform all maintenance as required.
- Store these instructions in the handle of your jack.
- Keep all decals on the unit clean and visible.

ASSEMBLY DIAGRAM



REF#	PART#	DESCRIPTION	QTY
1	T830003L-5	Power unit assembly	1
2	T830023.4.1(asm)	Universal joint assembly	1
3	GB308-6	Steel ball Ø6mm	1
4	TF1201C-29	Oil plug	1
5		Cotter pin Ø4x40mm	1
6		Return spring	2
7		Coupling connector	1
8		C-clip Ø25mm	2
9		Lifting arm assembly	1
10	T830003L-15	Saddle pad	1
11	T830003L-16	Saddle pin	1
12	T830003L-14	Saddle	1
13	T830003L-13	Shaft for front wheel	1
14		Shaft for saddle base	2
15		Sleeve for saddle base shaft	2
16		lower shaft	1
17		Connected bar	2
18	GB894.1-16	C-clip Ø19mm	2
19		Side plate	2
20	T830003L-12	Sleeve for front wheel	2
21	T830003L-11	Front wheel	2
22	GB97.1-10	Washer M10	2
23	GB861.1-10	Spring washer M10	2
24	GB70.2-10	Button-head socket cap screw M10X16mm	2
25		Carry handle base	2
26	GB859-8	Spring washer M8	6
27	GB70.2-8	Button-head socket cap screw M8X16mm	4
28		Supporting shaft	1
29		Connecting rod pintle	2
30		Bush for supporting shaft	2
31		Spring washer M16	2
32		Nut M16	2
33		Washer M18	2
34		Nut M18	2
35		Button-head socket cap screw M10X25mm	6
36		Spring washer M12	4
37		Button-head socket cap screw M12X25mm	4
38		Position rod	1
39	T84004-7	Rubber sleeve	2
40		Handle socket pin	2
41		Pan head combination drive machine screw M8X10mm	2
42		Big washer M10	2
43		Spring washer M10	4
44		Button-head socket cap screw M10X25mm	2
45	T830003L-6	Carry handle	2
46	GB78-M5x5	Cone point set screw M5X5mm	2
47		Caster base	2
48	T830003L.3(ASM)	Rear caster assembly	2
49	T825011BCL.1-2	Pin for roller	1
50		Handle socket	1
51	T830023.2-2	Contact roller	1
52	GB894.1-Φ12	C-clip Ø12mm	1
53	QLZ2C-1a	Handle socket screw M10X19mm	1
54	T830003L.1	Handle assembly	1
55	T815005L.1.1(asm)	handle lock pin	1
56	8L15001.1-3	Foam protective pad	1
57	T830023.MF	Seal kit	1

