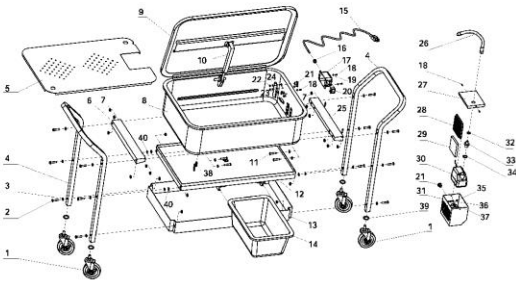


MOBILE PARTS WASHER  
OPERATING MANUAL



PARTS LIST AND DIAGRAM



Part No.	Description	Qty.	Part No.	Description	Qty.	Part No.	Description	Qty.
0001	Castor	4	0015	Power Cord	1	0029	Filter Screen	1
0002	Bolt	12	0016	Cable Clamp	1	0030	Pump Assembly	1
0003	Flat Washer	32	0017	Switch Box	1	0031	Pump Housing	1
0004	Handle	2	0018	Screw	7	0032	Grommet	1
0005	Washboard	1	0019	Flat Washer M4	7	0033	Spigot	1
0006	Left Tank Mount	1	0020	Power Switch	1	0034	Grommet	1
0007	Lock Nut	16	0021	Cable Guard	2	0035	Hex Nut M5	1
0008	Tank	1	0022	Hex Nut M4	5	0036	Flat Washer	1
0009	Tank Lid	1	0023	Spring Washer	5	0037	Screw M5x20	1
0010	Fusible Link	1	0024	Wire Flange	1	0038	Drain Plug	1
0011	Short Bolt	8	0025	Right Tank Mount	1	0039	Spring Washer	4
0012	Middle Shelf	1	0026	Flexible Nozzle	1	0040	Adjusting Washer	8
0013	Lower Shelf	1	0027	Pump Housing Cover	1			
0014	Drain Tank	1	0028	Filter Cover	1			

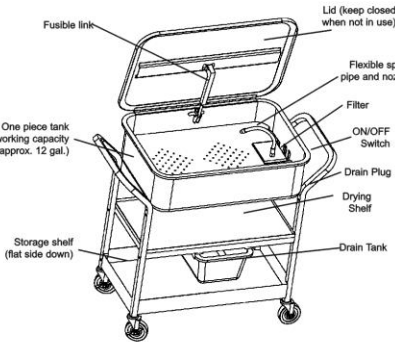
THIS PARTS LIST AND LINE DRAWING ARE FOR REFERENCE ONLY.  
THIS TOOL CAN ONLY BE SERVICED AT AN AUTHORIZED REPAIR FACILITY.

#### WHEN NOT IN USE

1. Switch off pump, close the lid and disconnect from the electrical supply.
2. Disconnect from the electrical supply before carrying out any maintenance or cleaning on the parts washer.

#### MAINTENANCE

1. The lid incorporates a fusible link to close the lid in the event of a fire. This link is non-resetting and must be replaced once it has been triggered.
2. Clean the pump filter regularly by sliding it away from the pump housing and rinsing in clean degreaser.
3. Do not allow the level of liquid in the parts washer to fall below the pump inlet, as damage to the pump can result.
4. Change degreaser as needed. Tank can be drained by removing the Drain Plug (38) located on bottom of Tank.



4

#### READ ALL INSTRUCTIONS BEFORE OPERATING

##### SAVE THESE INSTRUCTIONS

Thank you for purchasing Mobile Parts Washer. Before attempting to operate your new Parts Washer please read these instructions thoroughly. You will need these instructions for the safety warnings, precautions, assembly, operation, maintenance procedures, parts list and diagrams. Keep your invoice with these instructions. Keep the instructions and invoice in a safe, dry place for future reference.

**WARNING:** The warnings, cautions and instructions discussed in this instruction manual cannot cover all possible conditions or situations that could occur. It must be understood by the operator that common sense and caution are factors which cannot be built into this product, but must be supplied by the operator.

#### TABLE OF CONTENTS

Description	Page#
Specifications	1
Safety Rules	1-2
Getting Started	2
Power Requirements	2
Extension Cords	2
Assembly	3
Operation	4
Maintenance	4
Parts List and Diagram	5

#### SPECIFICATIONS

Tank Size	28" x 19" x 8"
Assembled Dimensions	38" x 21.5" x 37"
Electrical Requirements	120V, 60Hz
Pump Capacity	317 Gallons/hr.
Weight	82 lbs.

#### SAFETY RULES

1. Know your tool. Read this manual carefully. Learn the tool's applications and limitations, as well as specific potential hazards peculiar to it.
2. Ground all tools. If the tool is equipped with three-pin plug, it should be plugged into a three-pin electrical socket. Never remove the ground pin.
3. Do not abuse cord. Never use the cord to carry tools or pull the plug from an outlet. Keep cord away from heat, sharp edges or moving parts. Replace damaged cords immediately. Damaged cords increase the risk of electric shock.
4. Keep work area clean and well lit. Cluttered or dark work areas invite accidents.

5. Keep children away. All children should be kept away from the work area. Never let a child handle a tool without strict adult supervision.
6. Do not operate this tool if under the influence of alcohol or drugs. Read warning labels on prescriptions to determine if your judgment or reflexes are impaired while taking drugs. If there is any doubt, do not attempt to operate.
7. Use safety equipment. Eye protection should be worn at all times when operating this tool. Use ANSI approved safety glasses. Everyday eyeglasses only have impact resistant lenses. They are NOT safety glasses. Dust mask, non-skid safety shoes, hard hat, or hearing protection should be used in appropriate conditions.
8. Wear proper apparel. Loose clothing, gloves, neckties, rings, bracelets, or other jewelry may present a potential hazard when operating this tool. Please keep all apparel clear of the tool.
9. Don't overreach. Keep proper footing and balance at all times when operating this product.
10. Always disconnect the tool from the power source before making any adjustments, storing, servicing, or changing accessories. Such preventative safety measures reduce the risk of starting the tool accidentally.
11. Do not use the tool if the switch does not turn it on and off. Any tool that cannot be controlled with the switch is dangerous and must be repaired.
12. Check for damage. Check your tool regularly. If part of the tool is damaged it should be carefully inspected to make sure that it can perform its intended function correctly. If in doubt, the part should be repaired. Refer all servicing to a qualified technician. Consult your dealer for advice.
13. Keep away from flammables. Do not attempt to operate this tool near flammable materials or combustibles. Failure to comply may cause serious injury or death.
14. Store idle tools out of the reach of children and untrained persons. Tools may be dangerous in the hands of untrained users.

1

#### GETTING STARTED

Unpack your Mobile Parts Washer and check to make sure that it is not damaged and that all items are included.

Your Mobile Parts Washer includes:

Large Bolts	12
Small Bolts	8
Flat Washers	36
Lock Nuts	20
Adjusting Washers	8
Spring Washers	4
Handles	2
Lower Shelf	1
Middle Shelf	1
Tank Mounts	2
Tank	1
Drain Tank	1
Pump Assembly	1
Castors	4

#### POWER SOURCE CONNECTION

##### POWER REQUIREMENTS

This product is designed to operate on a properly grounded voltage, single-phase alternating current (ac) power source fused with a 20 amp time delayed fuse or circuit breaker. It is recommended that a qualified electrician verify the ACTUAL VOLTAGE at the receptacle into which the product will be plugged and confirm that the receptacle is properly fused and grounded.

**DO NOT OPERATE THIS PRODUCT IF THE ACTUAL power source voltage is more or less 10% than the correct voltage.** Contact a qualified electrician if this problem exists. Improper performance and/or damage to the product will result if operated on inadequate or excessive power.

#### CONNECT TO POWER SOURCE

##### WARNING

High voltage danger from power source!

Consult a qualified electrician for proper installation of receptacle at the power source. This product must be grounded while in use to protect the operator from electrical shock. If you are not sure if your outlet is properly grounded, have it checked by a qualified electrician. Do not cut off the grounding prong or alter the plug in any way and do not use any adapters between the product's power cord and the power source receptacle. Make sure the POWER switch is OFF then connect the power cord to a properly grounded voltage, 60 Hz, single phase, 20 amp power source.

##### EXTENSION CORDS

For optimum performance, an extension cord should not be used unless absolutely necessary. If necessary, care must be taken in selecting an

extension cord appropriate for use with your specific product.

Select a properly grounded extension cord that will mate directly with the power source receptacle and the power cord without the use of adapters. Make certain that the extension is properly wired and in good electrical condition. Extension cords must be a #12 gauge cord at the smallest. Do not use an extension cord over 25 ft. in length.

#### ASSEMBLY

##### Lower Shelf

1. Locate the two Handles (04) and the Lower Shelf (13).
2. Align the holes in the bottom of the Handles with the 4 holes in the corners of the Lower Shelf.
3. Place Flat Washer (03) onto Bolt (02) and insert Bolt through Handle and Lower Shelf.
4. Place Flat Washer (03) and Lock Nut (07) onto end of Bolt and hand tighten.
5. Repeat steps 3-4 for remaining holes in Lower Shelf.

Note: Do not fully tighten nuts at this time.

##### Middle (Parts Drying) Shelf

1. Locate the Middle Shelf (12) and the Tank Drain (14).
2. Insert the Tank Drain into the slots located in the bottom of Middle Shelf.
3. Align the holes in the 4 corners of the Middle Shelf with the holes in the middle of the Handles.
4. Place Flat Washer onto Bolt and insert Bolt through Handle and Middle Shelf.
5. Place Flat Washer and Lock Nut onto end of Bolt and hand tighten.
6. Repeat steps 4-5 for remaining holes in Middle Shelf.

Note: Do not fully tighten nuts at this time.

##### Tank Mounts

1. Locate the Left Tank Mount (06) and Right Tank Mount (25).
2. Note: Right Tank Mount has hooks for electrical cord storage.
3. Align the holes in the Left Tank Mount with the uppermost holes in either Handle.
4. Place Flat Washer onto Bolt and insert Bolt through Handle and Left Tank Mount.
5. Place Flat Washer and Lock Nut onto end of Bolt and hand tighten.
6. Repeat steps 3-4 for remaining hole in Left Tank Mount.
7. Align the holes in the Right Tank Mount with the holes in the remaining Handle. Hooks on Right Tank Mount should be facing AWAY from center on unit.
8. Follow steps 3-5 to install Right Tank Mount.

Note: Do not fully tighten nuts at this time.

##### Tank

- Note: You may need a second person to help properly align the Tank to the Tank Mounts.
1. Place Flat Washer onto Short Bolt (11) and insert through hole in Tank Mount.
  2. Place Adjusting Washer onto Short Bolt.
  3. Slide the end of the Short Bolt through the hole in the mounting bracket on Tank (08) bottom.
  4. Place Flat Washer and Lock Nut onto end of Short Bolt and hand tighten.
  5. Repeat steps 1-4 for remaining seven holes in Tank Mounts.

Note: The Power Switch is on the RIGHT side of the Tank and should be positioned above the RIGHT Tank Mount.

##### Tightening the Hardware

At this time, fully tighten all of the Lock Nuts onto the bolts which were installed in the previous section.

##### Mounting the Pump

1. Align the slots on the rear of the Pump Housing (31) with the tabs on the inner right side of the Tank.
2. Carefully slide the Pump Housing slots onto the tabs of the Tank.
3. Lower Pump Housing until it is resting on the Tank bottom.

##### Washboard

1. Position the Washboard (05) so that the lipped edges are facing down and the rectangular cut-out is on the right side.
2. Place your index fingers through the holes located at the front left and right rear of the Washboard.
3. Align the lipped edges of Washboard with the mounting brackets on inner Tank walls and gently lower into place.

##### Castors

1. Locate the four Castors (01) and the four Spring Washers (39).
2. Place a Spring Washer onto the threaded end of Castor.
3. Insert Castor threads into hole on bottom of Handle.
4. Tighten Castor in place with wrench.
5. Repeat steps 2-4 for remaining Castors.

Note: Two Castors have locks - these should be installed side by side, to allow you to control movement of the Parts Washer.

#### INSTALLING YOUR PARTS WASHER

1. Sit it on firm, flat, level surface in a well ventilated area and away from any open flames.
2. Fill only with a non-flammable water-based degreaser or cleaning agent, such as Simple Green to just below the level of the parts shelf (approximately 12 gallons).

3. Follow the degreaser manufacturer's instructions carefully.
4. Do not fill with flammable solvents such as kerosene, gasoline, etc.

##### WARNING

The pump of your parts washer may be damaged if you use solvents other than those listed.

#### OPERATION

Always wear protective clothing, gloves and goggles when using your Parts Washer.

1. Open the Parts Washer Lid (09) and place parts to be washed on the washboard.
2. Position the Flexible Nozzle (26) so that it is directly above your parts.
3. Turn the Power Switch (20) to the ON position.
4. Clean parts as needed.
5. Turn Power Switch to the OFF position.
6. Place parts on Drying Shelf until completely dry.
7. Empty Drain Tank, as needed, by sliding out of Drying Shelf brackets.

##### WARNING

Clean off any accidental splashes of degreaser on skin immediately, following the degreaser manufacturer's instructions carefully. Seek medical attention if necessary.

2

3