



Redline TR1500 Trike Motorcycle Lift Table Assembly & Operation Manual



Step 1

Use the provided bolts shown to secure the front wheel stop to the front of either the lift itself, or to the front of the front extension panel if you intend to use the front extension panel. We do not recommend using the front extension unless you actually have an unusually long motorcycle and require this panel.



This photo below shows the wheel stop installed.



Step 2

Assuming you wish to install the front extension, it slides over the front of the table as shown.



Be sure to line up the large holes on the sides of the front extension panel with the same holes found in the lift table.



Next, you'll install the front extension support pole. The TR1500 comes with 4 poles total as shown below. The 2 longest poles support the side extensions (installed later). The middle length pole is an anti-tip stabilizer bar (installed later). Finally, the shortest pole is the front extension support pole.



You'll insert the shortest pole through the front extension panel and also through the lift table at the same time, resulting in the shortest pole slightly exiting the front extension panel on both sides. Once done, you'll insert the provided clevis pin and cotter pin on each side of the front extension support pole

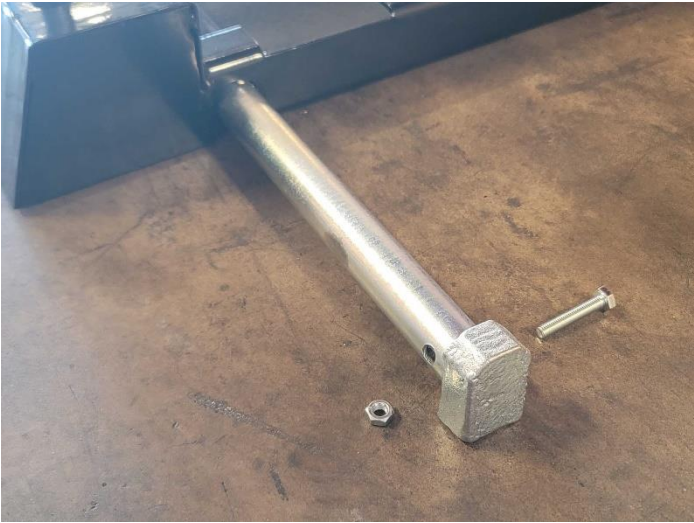


Step 3

Next, you'll insert the middle length pole into the base of the machine. This is an anti-tip stabilizer bar.



You'll then use the pictured hardware to install the tip-over feet into the ends of the tip-over bar.



Step 4

In step 4, you'll insert the 2 longest support poles into the 2 most rearward holes in the lift's tabletop, and then slide the side extensions over those protruding bars.

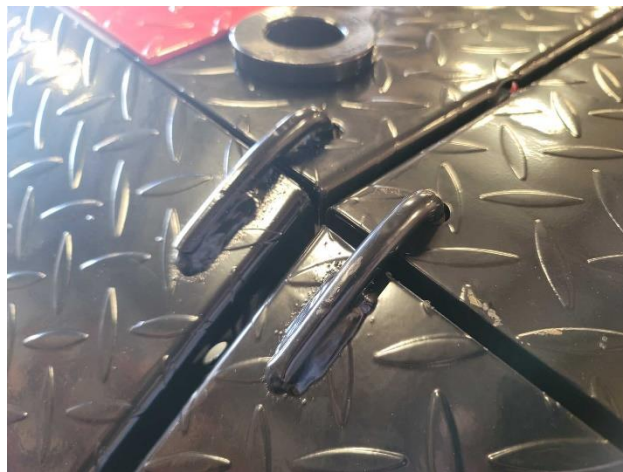


Again, using the supplied hardware you'll insert all 4 clevis and cotter pins, effectively pinning the side extensions into place so that they cannot possibly slide off without intentionally doing so.



Step 5

Next, you'll attach the 3 piece ramp assembly to the table top as shown using the hooks of the ramps to drop into the holes in the table top, as well as the holes in the side extensions



Hardware is supplied to bolt all three ramps together, but we do not recommend doing so as it makes it especially difficult to remove and replace the ramps when all three are connected. Nevertheless, the hardware and bolt holes are included in case the customer wishes to do so.



Step 6

If you purchased the optional wheel vise with your trike lift, both your table and your front extension panel come pre-drilled with the necessary mounting holes to install the Redline wheel vise to this table as shown. Be sure to use ratchet straps to secure your bike to the lift as the wheel vise alone is not sufficient to hold the motorcycle firmly to the lift.



Step 7

Install the eye bolts into the front of the side extensions using the washer and nut as shown below. These eye bolts allow you to attach ratchet straps to the table top and thus, firmly secure the load to the lift.



Step 8

Now it's time to connect your pump to the table. Simply remove the red cap as shown in the photo below and thread the lift's hydraulic hose into the pump, being sure not to over tighten with pliers. Firm hand-tightening is fine.



Next, be sure to pull the small brass-colored vent into the upward position as shown. This allows the pump reservoir to breathe and allows air to come in and out of the reservoir during operation.



The standard pump for the TR1500 will come with an air hose and hand operated air valve. If you wish to operate your table via compressed air, you'll now connect your air hose to the valve shown below. The air motor portion of this pump requires at least 100 psi to operate. We do not recommend supplying more than 155 psi of compressed air to the pump as you may damage the air motor. The pump can either be operated by manual input via the long foot pedal, or raised via air power by operating the hand control valve shown below.



In the event that your pump does not make enough pressure to meet the lift's maximum capacity of 1,500 lbs, you may need to adjust the relief pressure of the pump. The relief pressure is the maximum amount of pressure the pump can produce. In such a case, you'll remove the red cap pictured below and locate this video on YouTube and follow the steps. Be sure to never load more than 1,500 lbs onto your lift. Adjusting your pump's pressure to allow it to lift more than 1,500 lbs is not safe. We have tested this table with more than 1,500 lbs and determined that it will experience permanent structural deformation of the frame if loaded beyond 1,500 pounds. Thus, be extremely careful not to do this.



Priming the Redline 1500HD Pump & Raising the Release Pressure

4K views • 10 years ago



This video shows you two ways to prime this pump plus how to refill the reservoir and raise the release pressure, allowing the lift ...

Step 9

If you purchased the optional electric upgrade for the TR1500, you'll connect your hydraulic hose as shown, being sure not to over tighten with pliers. Firm hand-tightening is fine.



Similar to the standard air-over-hydraulic pump, the release pressure of the electric pump can be raised by locating and watching this different video on YouTube.



Raising the Release Pressure on Titan and Redline Electric Lift Table Pumps

1.2K views • 8 years ago



Redline Stands

See and order this power unit at ...



Raise Your Release Pressure | Stall the Pump | How To Adjust the Lowering Rate

Remove the dipstick with red knob and add roughly 1 gallon of customer-supplied #32 hydraulic oil. Top off the reservoir so it is full to the top, disregarding the hashmarks on the dipstick.



The electric pump already comes with a substantial amount of electrical cord. We do not recommend using a long, thin extension cord to operate the electric pump as you may experience significant “amp loss” and harm the motor. If you’re going to use an extension cord, the shorter and thicker the size of the cord, the better.



On the optional electric pump upgrade, the green button will raise the lift, and the red button kills power to the motor, and the lever with black ball knob at the end will lower the lift.



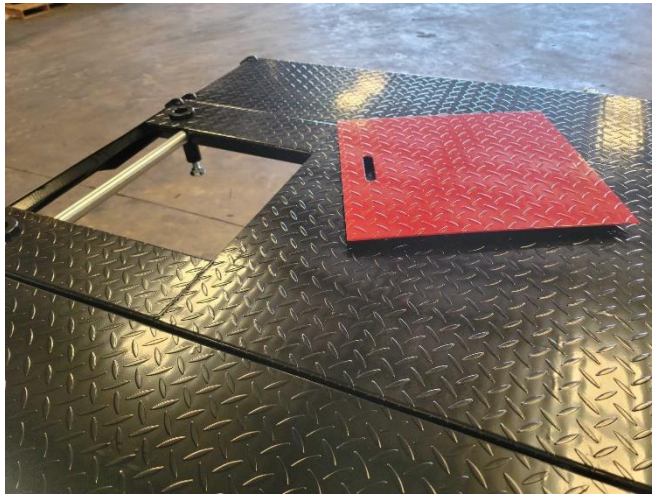
Step 10

It is recommended the customer always lower the lift and rest the weight of the load onto the safety locks when in use and not rely on the hydraulic pump to hold pressure in order to support the weight of the load. To operate the safety lock, simply move this lever shown below to the left or right, respectively, to engage and disengage the safety locking bar, also pictured below toward the bottom. Note that the lift will not lower until it is slightly raised in order to free the safety lock bar of pressure, and the safety bar then moved to the upward position.



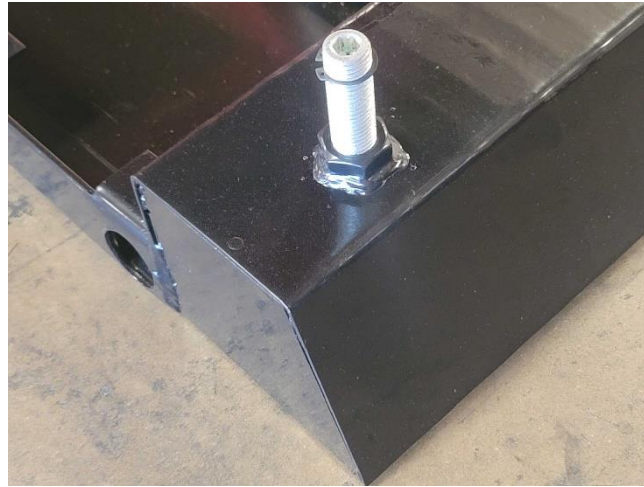
Step 11

The drop out panel is easily installed and removed with no tools or hardware. Notice in this picture below that the side extension support pole runs through the drop out panel, effectively rendering the drop out panel ineffective for rear wheel removal. For this reason, rear tire changes are typically not possible if the side extensions are installed, so be sure to leave them off the table if this is your intent.



Step 12

To operate the casters and roll the lift around your shop, use a large allen key to turn clockwise on the caster post shown below. Spin the caster downward at each corner until all four casters are supporting the weight of the table and the frame of the table is no longer touching the ground. "DO NOT" attempt to lower the casters if the lift table is loaded as this will surely destroy the casters. The casters are only strong enough to support the table itself, and nothing more.



Your Redline TR1500 is now ready for use. If you have technical questions about your lift, you can email us at Tech@RedLineStands.com WE THANK YOU FOR YOUR BUSINESS!!