

# M-1300C-TRIKE

## 1300 lb Capacity Trike Lift

### USER'S MANUAL





# TRIKE MOTORCYCLE LIFT

*An extra wide platform designed especially  
for three-wheel motorcycles.*

M-1300-TRIKE  
Trike  
Motorcycle  
Lift



## SPECIFICATIONS:

## M-1300-TRIKE

Lifting capacity	1,300 lbs.
Height range	6 ¾" - 38 ½"
Width overall	62 ¼"
Length overall	132 ¼"
Shipping weight	660 lbs.

## Features:

- ♦ 1,300 lb. lifting capacity
- ♦ Air/hydraulic pump
- ♦ Designed especially for three-wheel motorcycles
- ♦ Extra-large platform
- ♦ 38" working height
- ♦ Built in drop-out panel
- ♦ Powder-coated, diamond tread finish

# **TUXEDO DISTRIBUTORS LIMITED WARRANTY**

## **Structural Warranty:**

The following parts and structural components carry a five year warranty:

Columns	Top Rail Beam	Uprights	Arms Swivel Pins
Legs	Carriages	Tracks Overhead Beam	Cross Rails

## **Limited One-Year Warranty:**

Tuxedo Distributors, LLC ("Tuxedo") offers a limited one-year warranty to the original purchaser of Tuxedo lifts and Wheel Service in the United States and Canada. Tuxedo will replace, without charge, any part found defective in materials or workmanship under normal use, for a period of one year after purchase. The purchaser is responsible for all shipping charges. This warranty does not apply to equipment that has been improperly installed or altered or that has not been operated or maintained according to specifications.

## **Other Limitations:**

This warranty does not cover:

1. Parts needed for normal maintenance
2. Wear parts, including but not limited to cables, slider blocks, chains, rubber pads and pulleys
3. Replacement of lift and tire changer cylinders after the first 30 days. A seal kit and installation instructions will be sent for repairs thereafter.
4. On-site labor

Upon receipt, the customer must visually inspect the equipment for any potential freight damage before signing clear on the shipping receipt. Freight damage is not considered a warranty issue and therefore must be noted for any potential recovery with the shipping company.

The customer is required to notify Tuxedo of any missing parts within 72 hours. Timely notification must be received to be covered under warranty.

Tuxedo will replace any defective part under warranty at no charge as soon as such parts become available from the manufacturer. No guarantee is given as to the immediate availability of replacement parts.

Tuxedo reserves the right to make improvements and/or design changes to its lifts without any obligation to previously sold, assembled or fabricated equipment.

There is no other express warranty on the Tuxedo lifts and this warranty is exclusive of and in lieu of all other warranties, expressed or implied, including all warranties of merchantability and fitness for a particular purpose.

To the fullest extent allowed by law, Tuxedo shall not be liable for loss of use, cost of cover, lost profits, inconvenience, lost time, commercial loss or other incidental or consequential damages.

This Limited Warranty is granted to the original purchaser only and is not transferable or assignable.

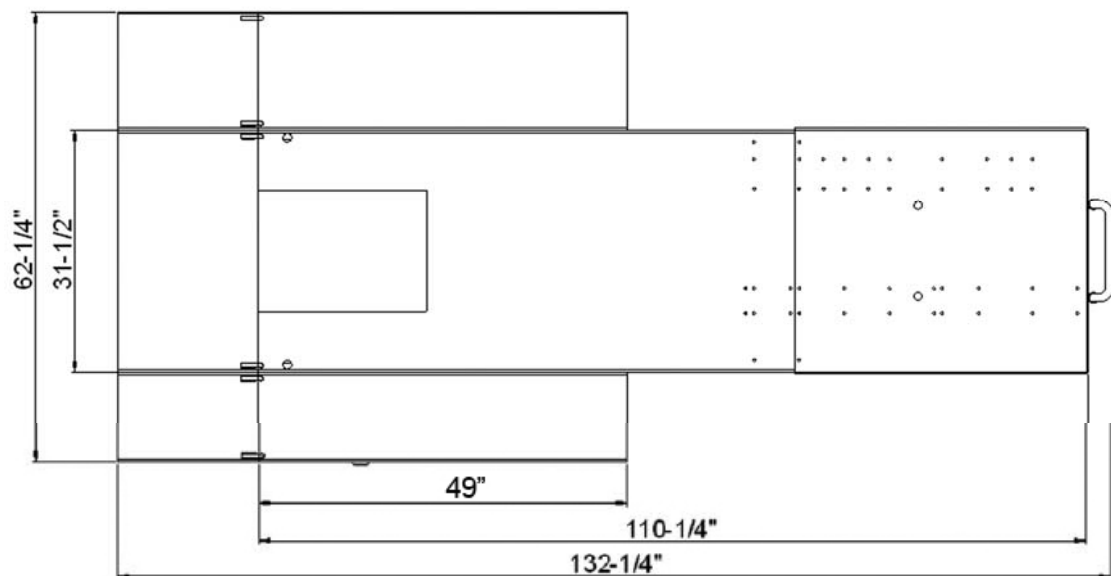
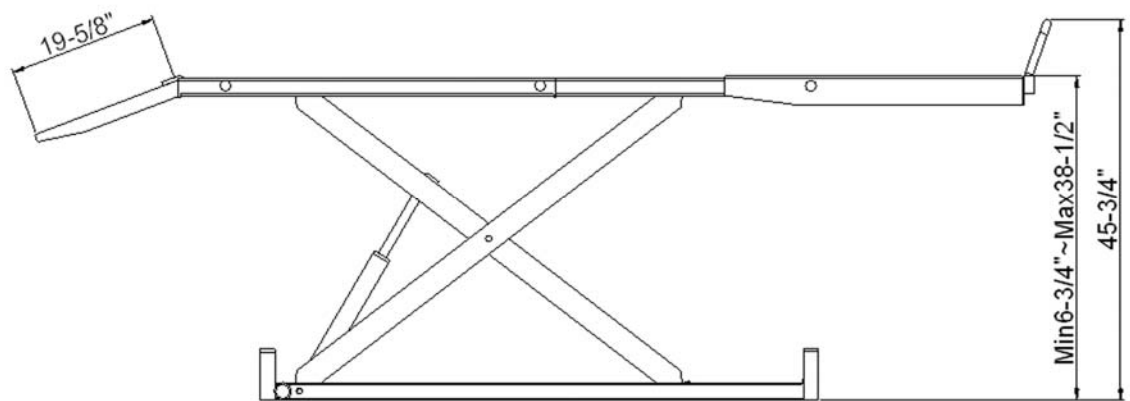
Some states do not allow exclusion or limitation of consequential damages or how long an implied warranty lasts, so the above limitations and exclusions may not apply. This warranty gives you specific legal rights and you may have other rights, which may vary from state to state.

Lift Specifications:

**Lift Frame:**

Overall Width: 62-1/4"  
Overall Length: 132-1/4"  
Raised Height (max): 53"  
Lifting Capacity: 1320lbs

**Air-hydraulic pump:** (compressed air) 8 bar / 116 psi



## Installation

STEP 1 Open the box, take out the lift frame.

STEP 2 Lift up the deck until it rest on the lock position.(Fig. 2)

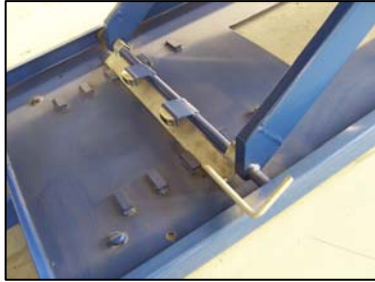


Fig. 2



Fig. 3

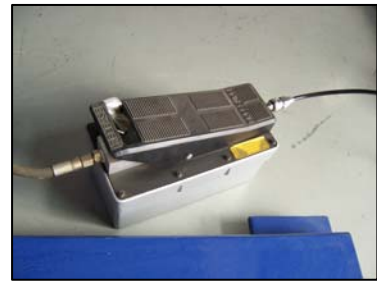


Fig. 4

STEP 3 Connect the hose and the hydraulic foot pump.( Fig. 3) Remember to change the oil tank plug with the ventilating one supplied.

STEP 4 Connect the compressed air to the foot pump. ( Max. pressure 8bar/ 112 psi) (Fig.4)

STEP 5 Lift up the deck with the foot pump.

STEP 6 Mount the long and short connecting rods on the main deck for side boards.

STEP 7 Put on the side boards and lock them (Fig. 5-6) .

STEP 8 Put on the rear ramps (Fig. 7)



Fig. 5

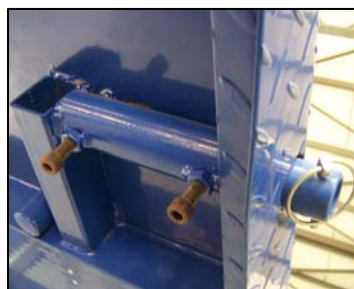


Fig. 6



Fig. 7

STEP 9 Mount the front extension board if purchased.(Fig. 8)

STEP 10 Inset the front stop bar.



Fig. 8



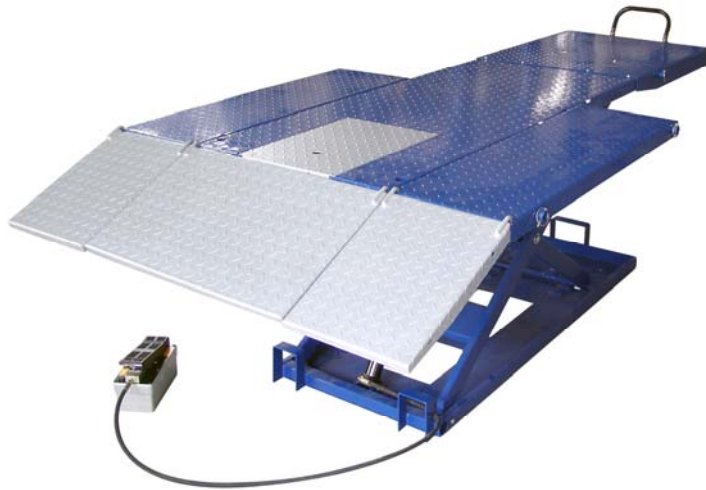
Fig. 9

STEP 11 Mount the front wheel vise if purchased.(Fig. 9)

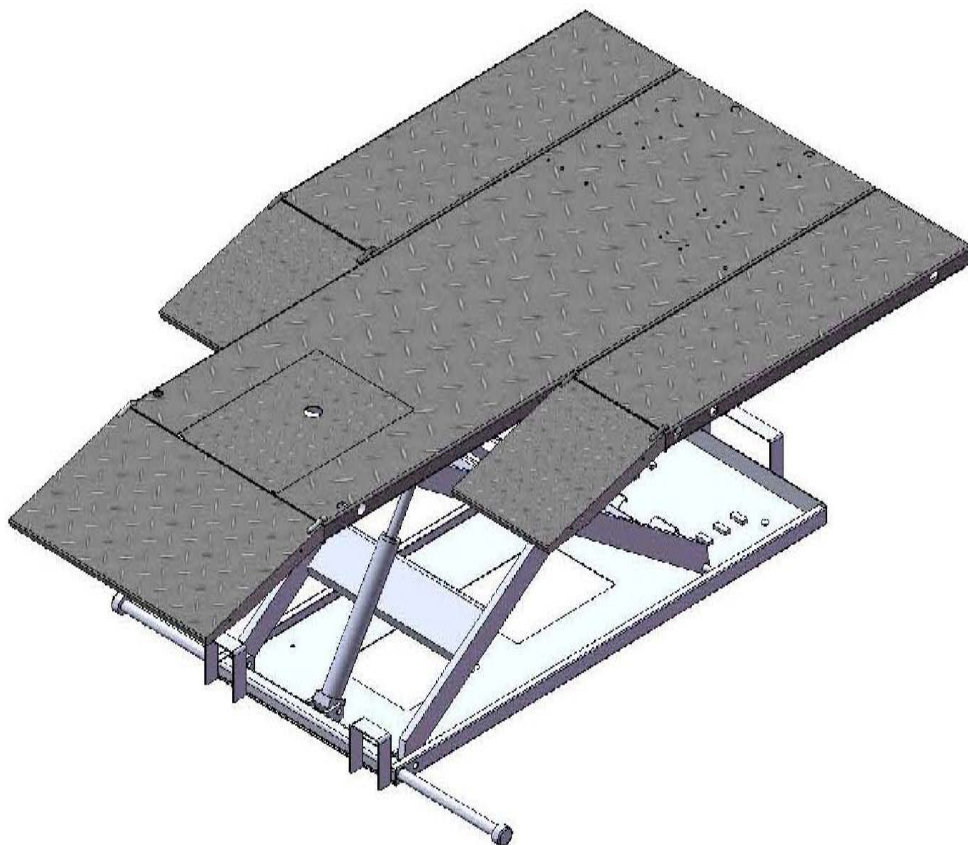
STEP 12 Raise the deck to the highest position then lower it down to bottom for two or three circles.

Note: the lock shall be released before lowering.

Now the lift is ready for operation.



The side boards can be mounted on front also. See picture below.



#### Operating Tips:

1. DO NOT attempt to lift more than the rated capacity.
2. Lift should only be operated on a level foundation.
3. Remove any potential obstacles that might impede platform travel.
4. The machine or vehicle that is being lifted should be balanced on the lift.
5. Do not remove heavy components from a raised machine or vehicle without first installing adequate supports .The vehicle may become unbalanced and fall.
6. Lock the frame at heights.  
During lifting, when the locking bar's end just pass the ladder block of the height, stop the air-hydraulic pump, then push the releasing lever to lower down the frame. The lift will be lock at the position.
7. Lower down the frame.  
First lift up the frame so the locking bar passes the ladder block. Pull up the locking bar to the magnet and hold it. Then push the releasing lever on the air-hydraulic pump to lower down the frame. The locking bar will drop down after the frame is totally down.

#### Note:

1. It is suggested not to lift heavy loads when the frame is at bottom position. The proper way is to lift the frame about 100 mm high without load.
2. It is normal for the frame to lower slowly without a load.
3. If needed, anchor the lift frame to the ground using anchor bolts.

#### Daily Maintenance:

1. Insure all bolts are secured and snug with lock washer, nylon lock nuts, or cotter keys.
2. Lift locking mechanism should be lubricated to operate properly.
3. Check spring on locking mechanism for constant tension.
4. Check cylinders and hose for loose connections and leaks
5. Check oil level in pump reservoir / tank.



**Troubleshooting:**

1. Air-hydraulic pump will not operate.
  - Check compressed air supply.
2. Lift mechanism does not move up and down smoothly.
  - Move vehicle location on the lift for more equal weight distribution.
  - Raise the lift all the way to the top and then return to floor. Repeat 4-6 times in order to get the air out of the hydraulic system.
3. Lift does not lift its rated capacity.
  - Move vehicle location on the lift for equal weight distribution.
  - Check the pressure of the compressed air supply.  
Make sure the pump is getting adequate air.
4. Cylinder leak under rated load
  - Check for leaks at the hydraulic hose, fittings, cylinders and pumps.
  - Contamination may be in the check valve preventing the valve from completely closing.  
If cylinder continues to leak down, pump may have a faulty valve. Contact the service engineer.
5. Lift will not lower
  - Raise the lift up one to two inches. Let the sliding block bar fully pass the locking ladder then pull the bar to magnet. If the magnet does not work, change it with a new one.
  - Check the lift frame for any obstacles preventing lowering.

# PARTS DRAWING

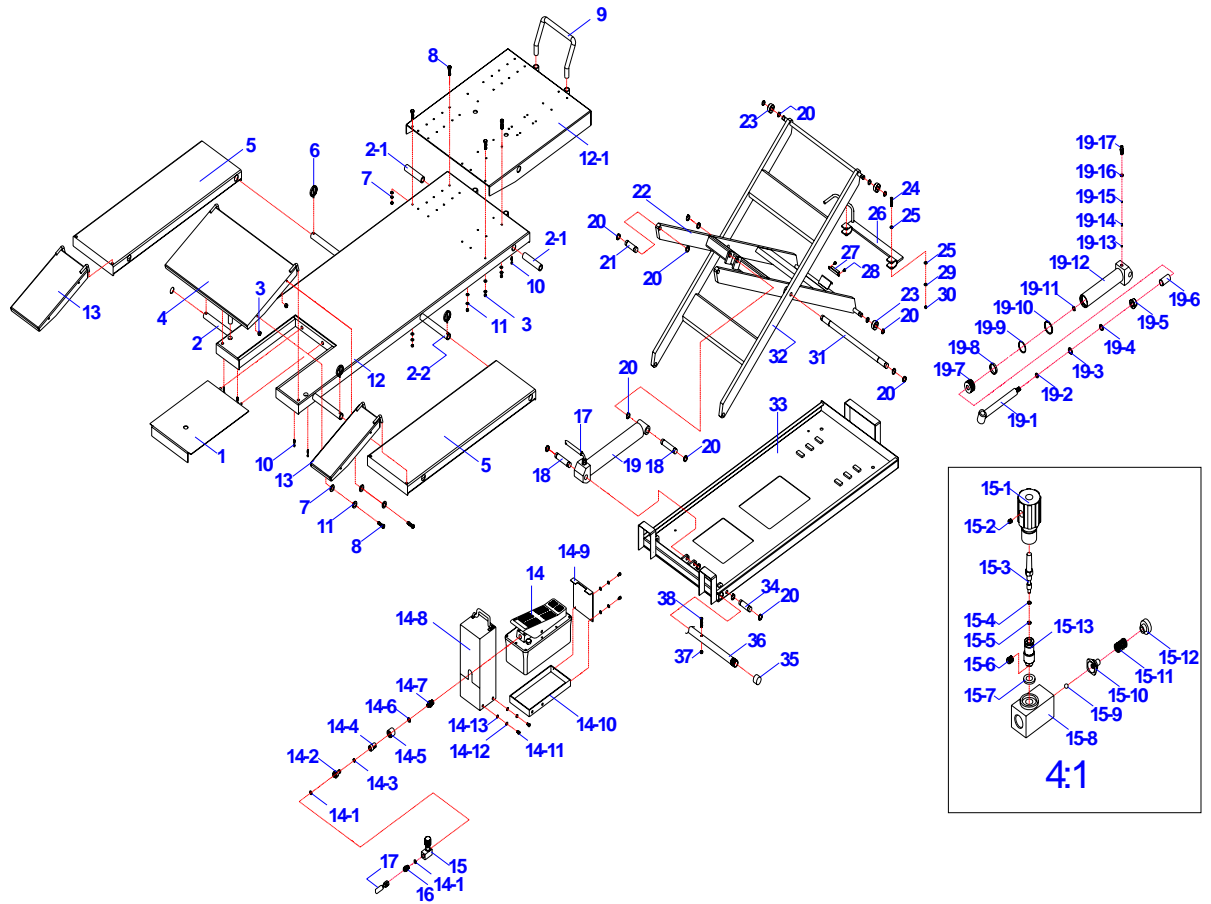


Fig. A

## PARTS LIST

ITEM	CODE	DESCRIPTION	QTY
1	JP17-08000-000	rear plate	1
2	JP19-00003-000	short connecting rod	2
2-1	JP19-00004-000	fixing rod	2
2-2	JP19-00005-000	long connecting rod	1
3	5202-00008-000	nut	8
4	JP17-00001-000	main ramp	1
5	JP19-00001-000	side board	2
6	JP04-00004-000	pin	4
7	5301-00008-000	flat washer	8
8	5101-08020-000	bolt	8
9	JP17-00011-000	front stop bar	1
10	5105-10030-000	socket head bolt	8
11	5303-00008-000	spring washer	4
12	JP18-01000-000	main deck	1
12-1	JP19-00006-000	front extension	1
13	JP19-00002-000	side ramp	2
14	QY030S-00	air-hydraulic pump	1
14-1	5308-00014-000	copper wash	2
14-2	JP17-07204-000	output connector	1
14-3	5901-00010-000	O-ring	1
14-4	JP17-07202-000	connector	1
14-5	JP17-07203-000	locking nut	1
14-6	5308-00012-000	copper wash	1
14-7	JP17-14001-000	output connector	1
14-8	JP01-08003-000	protection	1
14-9	JP01-08005-000	fixing board	1
14-10	JP01-08004-000	holding board	1
14-11	5110-06010-000	screw	6
14-12	5306-00006-000	spring washer	6
14-13	5301-00006-000	flat washer	6
15	JP17-13000-000	single way valve	1
15-1	JP17-13002-000	knob	1
15-2	5112-04006-000	threaded pin	1
15-3	JP17-13001-000	valve pin	1
15-4	JP17-13004-000	Back ring	1
15-5	5901-25718-000	O-ring	1
15-6	5112-05005-000	threaded pin	1

ITEM	CODE	DESCRIPTION	QTY
15-7	JP17-13005-000	washer	1
15-8	JP17-13009-000	valve body	1
15-9	5601-00005-000	ball	1
15-10	JP17-13006-000	ball seat	1
15-11	JP17-13007-000	spring	1
15-12	JP17-13008-000	screw	1
15-13	JP17-13003-000	threaded sleeve	1
16	JP17-00012-000	extension connector	1
17	JP08-04004-000	hose	1
18	JP17-00004-000	cylinder shaft	2
19	JP17-04000-000	cylinder	1
19-1	JP17-04200-000	piston rod	1
19-2	5901-00190-000	O-ring	1
19-3	5309-00052-000	Circlip	1
19-4	5906-00300-000	dust ring	1
19-5	JP08-04005-000	Guide ring	1
19-6	JP17-04002-000	position ring	1
19-7	JP08-04003-000	piston	1
19-8	JP08-04002-000	guide ring	1
19-9	5901-00400-000	O-ring	1
19-10	5905-00400-000	U-ring	1
19-11	5304-00025-000	Circlip	1
19-12	JP17-04100-000	cylinder body	1
19-13	JP17-04004-000	board	3
19-14	QY02-02101-000	spring	3
19-15	SJ05-03015-000	limit valve	3
19-16	5308-00140-000	copper washer	1
19-17	JP08-04001-000	connector	1
20	5304-00020-000	circlip	18
21	JP17-00002-000	shaft 1#	2
22	JP17-02000-000	scissor frame 1#	1
23	JP17-00012-000	roller	4
24	5110-05035-000	screw	2
25	5301-00005-000	flat washer	4
26	JP17-06000-000	safety bar	1
27	JP08-00009-000	magnet	2
28	5110-03008-000	screw	4

ITEM	CODE	DESCRIPTION	QTY
29	5306-00005-000	spring washer	2
30	5201-00005-000	nut	2
31	JP17-00007-000	shaft 4#	1
32	JP17-05000-000	scissor frame 2#	1
33	JP17-03000-000	bottom frame	1
34	JP17-00003-000	shaft 2#	2
35	JP17-00010-000	screw cap	1
36	JP17-00009-000	balance bar	1
37	5206-00006-000	self locking bar	2
38	5101-06050-000	bolt	2